

1972

1972

WESTWARD HO!

Sometimes I wonder if either of us really believed it when we kept telling everyone we were "leaving in the morning!" The previous day had seen about every form of winter precipitation known to man and by evening all creation, including the pavements, was covered with up to an inch of solid ice. Tree limbs were bending low, utility wires seemed ready to groan under the weight of it and even walking was practically impossible.

Yet here we were, on December 13, right on schedule (well, within two hours of it!) "pounding the highway" heading for the west coast. To our pleasant surprise the road surface was absolutely clear, mostly dry and quite safe, thanks to that wonderfully efficient crew of Michigan State Highway Snow Removers and Salt Throwers. Only a few inches off the shoulder the ice was as thick as it was yesterday for the temperature was well below freezing.

We traveled through a landscape of this ice the entire first day and half of the next. Less than a hundred miles from home I slipped and fell quite hard on the ice at a roadside rest area but fortunately there were no ill effects, not even any bruises that I ever discovered.

Our shiny new Maverick, fresh from the show-room and with less than 150 miles on the meter, slowed up down considerably for the first 1000 miles.

Throughout the remainder of Michigan, the little corner of Indiana and Illinois, we saw little else but ice. But with the dry roads, there was no dangers involved and we found it easy to maintain a steady, if somewhat slower than to our liking, speed. Part of the day was bright and sunny and the sparkle on the ice made a glare which was a little hard on the eyes.

It was tempting to shoot a lot of pictures for we saw many interesting ice formations but a couple of shots at a roadside rest area was sufficient.

Because of a late social engagement the evening before, we did not plan to cover a record number of miles that first day. By dinner time we realized a "MOTEL 6" was in the St. Louis Area. We decided to drive straight to the motel without stopping for supper and we were registered in by 7:30 PM.

"MOTEL 6" is a new chain of fine, comfortable rooms at rates the traveler can afford. All beds are double; 1 person alone is \$6.60, two is \$7.70. A two-bed room with three persons is \$8.80, four is \$9.90. They are impeccably clean,



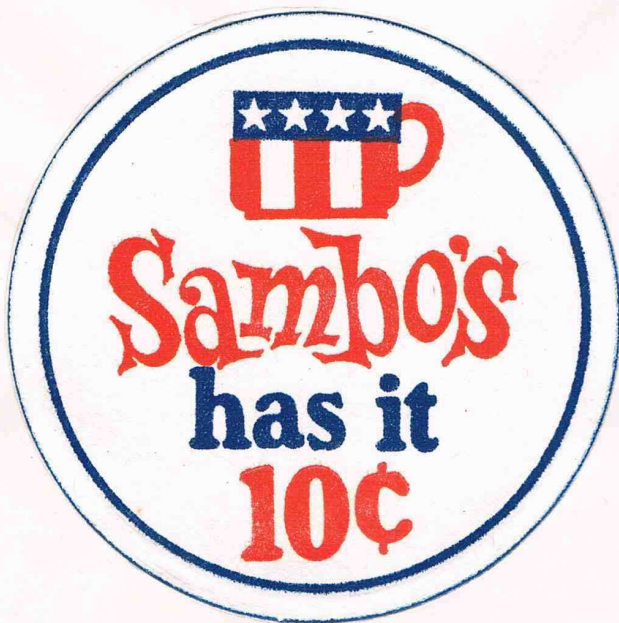
very few of the luxuries are missing. TV is metered; for a quarter you get all you want until you leave, then the maid resets it.

This chain of Motels are prevalent on the west coast and are being developed all over the country. We have one here in Grand Rapids on 28th St., and there is also one in Lansing. We highly recommend them to our friends.

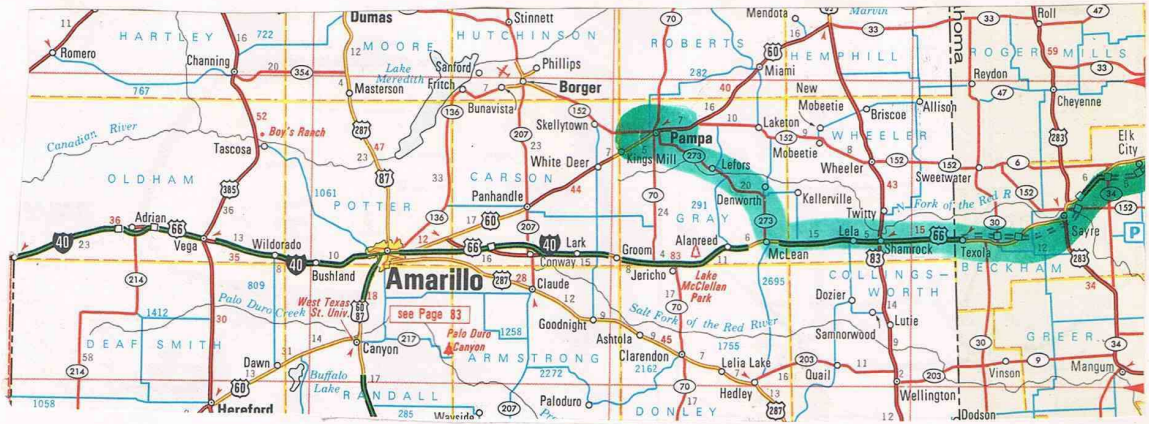
Adjacent to the motel was "SAMBO'S." They boast of a splendid 10¢ cup of coffee. We had a meal there before turning in. We saw many of these restaurants over the southern section of the country.

The second day out, we drove beyond the icy area as we entered the Ozard region. We noticed balmy temperatures but not much sunshine.

We have never been much impressed with any scenery we have experienced driving through that portion of Oklahoma which we are privileged to cover. If I lived there I believe I could learn to appreciate it. On one trip we drove through Clarendon where the film "Oklahoma" was produced. This time we were mostly interested in getting as far as we can before nightfall.



| | | | | | |
|--|---|-----------|---------------|-----------|---|
| 160140090075050030 | | | | | |
| TULSA | | CLARENORE | | BIG CABIN | |
| 1 | 2 | 3 | 4 | 5 | 6 |
| VINITA | | | AFON MIAMI | | |
| ENTRANCE | | | STATE LINE | | |
| CLASS | | | TICKET NUMBER | | |
| 1 | | | 169899 | | |
| FARE RECEIPT | | | EXIT | | |
| | | | ENTRANCE | | |
| OKLAHOMA WILL ROGERS TURMPIKE DRIVE CAREFULLY | | | | | |
| STUB IS NOT TO BE DETACHED | | | | | |
| EXCEPT BY ATTENDANT | | | | | |
| RESTAURANT AND FILLING STATION SERVICE 24 HOURS A DAY | | | | | |



Several weeks before leaving on this trip I had made arrangements to visit an Uncle and Aunt of mine who live in Pampa, Texas. A little west of Oklahoma City I telephoned them to assure them that we were on the way and would make it to their place in good time. They gave us a few helpful driving instructions and we set out.

What a trip! Scarcely had we taken to the road again than we encountered icy spots. This soon turned into a solid glare, then packed snow, followed by a near-blinding blizzard. I became very distraught and nervous, much to Stanley's irritation. Apparently they do nothing to the highways in such instances.

For several hours we "fought the elements" but managed to somehow keep rolling and finally reached our destination about 11:00 PM.

We remained with these kind relatives the entire next day, leaving about 10:00 AM on the following day, Saturday. This gave Stanley a chance to have the fan belt on the air conditioner repaired. We felt we could easily need it later on in the Southwest.

We always have a wonderful visit at this place. Uncle Homer is my Mother's youngest brother. He is 83 years old and in fair health. He and Mother are the only two left in the family circle any more and I like to see them whenever I am out that way.



The cold weather continued but the road conditions were excellent as we sped across New Mexico and Arizona. The scenery was particularly beautiful around Flagstaff. The elevation is high and lots of snow on and among the pines furnished picture post-card beauty to the area. It is difficult to travel this route and not turn north toward Grand Canyon!

After spending Saturday night in Holbrook, New Mexico, we telephoned my sister Mary early the next morning, informing her we would arrive at her place by nightfall.

LOS ANGELES AND VICINITY

This was our third visit to the Los Angeles Area. We do not feel the Freeway system is particularly hard to drive. One needs only to know precisely where you are aiming for and to keep alert and moving...and rapidly at that.

Mary's Mobile Home in Compton is nice and comfortable and she had it very beautifully decorated for Christmas. She was very patient all the time we were there. It became sort of "headquarters" for we left the car there as well as extra luggage while we continued on to Hawaii. We managed to strew our belongings about with real abandon. We seemed to be coming or going most of the time. It goes without saying that a great deal of laughing, visiting and reminiscing went on most of the while.

While here Stanley and I went to visit our Cousin, Robert Taylor and his wife Helen, who live in Anaheim. It is always so good to visit with them for they make us feel so welcome.

It is also refreshing to see little Pancho, Mary's Chihuahua. He seems to remember us and well he should for we were car companions all the way across the United States in the spring of 1971. Pancho and I took many "three-legged walks" while there - referring to the dog with such descriptive adjectives of course!



We didn't plan to do much in the way of sight-seeing during the three days we had before leaving for the Islands.

It was good to once more visit the hospital where my sister works part time. The people there are so cordial and friendly that one feels they have been acquaintances for a long time. The Christmas tree there was a real beauty.

One evening we drove to Hollywood where Mary wanted us to see "Santa Claus Lane." In years past they would bring their little boy to see this beautifully decorated spot each year at the Christmas Season. We were favorably impressed with the beauty of Wilshire Blvd. but Mary felt that it in no way compared with the way it looked many years ago.

Of course we made a few trips to the Super Market, the variety store and even one trip to the discount Shopping Center.

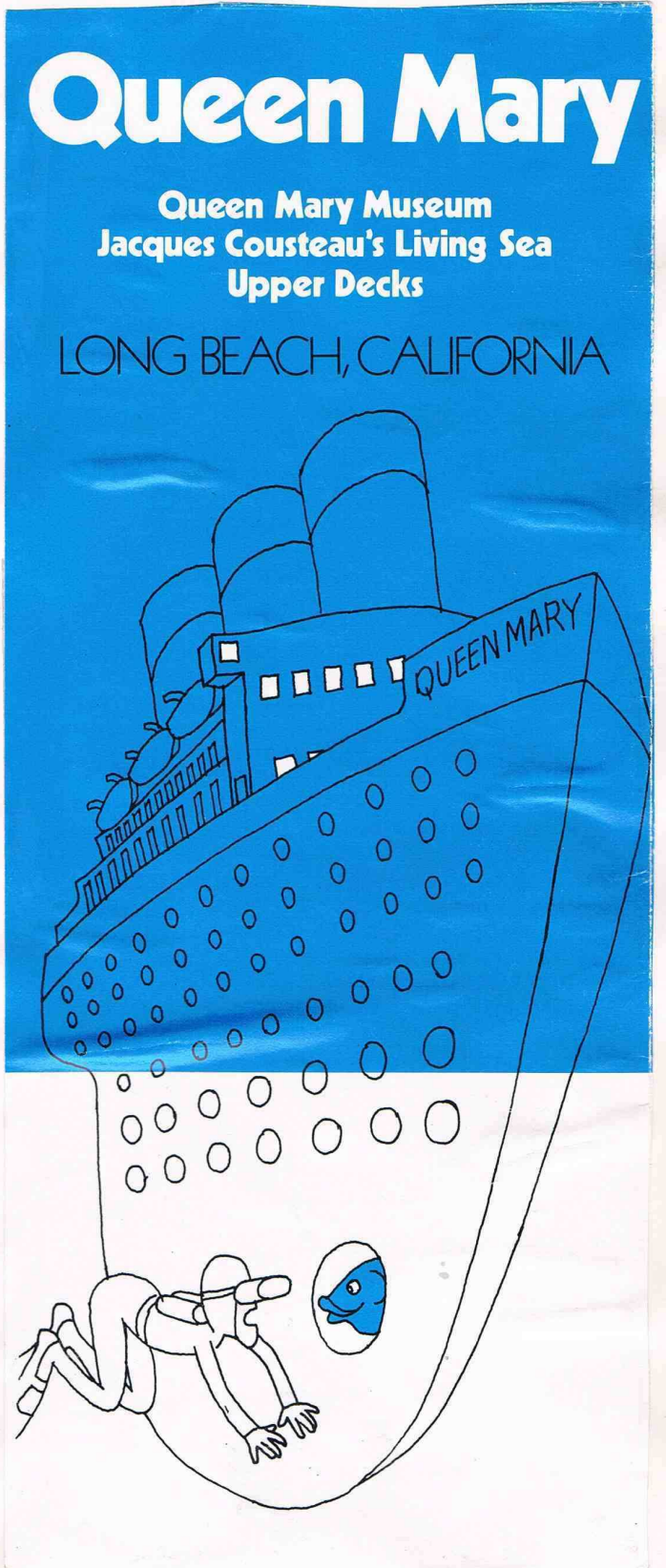
One day we went to a Florist's and she ordered a Christmas Poinsetta to be sent to our Mother for the Holidays. Incidentally we did enjoy the special beauty of the Poinsetta as they bloomed so freely in the yards of the residents of Southern California.





One Day Mary and I managed to drag Stanley out for a tour through the Queen Mary, that great luxury Liner now anchored permanently at Long Beach, California.

The tour gave us all a most memorable look at the ship's "innards;" her engine rooms, cabins, dining rooms and salons. The great vessel also houses numerous unusual shops as well as several restaurants and Banquet Rooms. People in the area come to shop and dine so the huge craft is not merely a tourish attraction. The entire trip would consume several hours; for us it took about 3½.



ALOHA!

To a certain degree I anticipated the plane trip nearly as much as the visit to the Islands! Only a couple of very short flights on "model T's" was the sum of my flying experience. Consequently when I first stepped aboard the lovely (and enormous) Continental 747 I could not describe my eager excitement. Over 300 passengers! The area looked like an auditorium!

Our tour group traveled Economy class so ours was the "Micronesia Room," farthest to the rear of the plane. There are 46 rows of seats and Stanley and I landed in row 45! Our dear friends from Michigan, Murt and Marie Hicks drew row 46, directly behind us.

My fears of rough traveling were soon forgotten when I saw the advantages of this area. We were adjacent to an open area where we could move about a bit if we so wished, the rest rooms were very near and a nearby buffet held huge bowls of popcorn for nibbling.

The five-hour flight was more like $4\frac{1}{2}$ hours. It gave time for contemplation. At last, a dream come true, a dream of many, many years. I could hardly believe it.



HONOLULU

FLIGHT **DATE**

6 0 7 1 2 2 1

SEAT NUMBER

| row | seat |
|-----|------|
| 4 5 | C |

see reverse


CONTINENTAL 747
BOARDING PASS
MICRONESIA
ROOM

FORM 653-Y
PRINTED
IN U. S. A.

CONTINENTAL AIRLINES



**GROUP
CHECK**

NAME _____

GROUP Methodist Cbn ret

DESTINATION 607 ITNL

Y- **16-23-99**





CONTINENTAL 747

NO. 5



CONTINENTAL

AND



HOLLYWOOD PARK
PRESENTS

RACING IN THE SKY

See three outstanding thoroughbred races on the motion picture screen. If you win two of the three races, notify your Director of Passenger Service for your prize.

YOUR SELECTIONS:

| RACE | HORSE |
|------|--------------|
| 1 | POONASRULLAH |
| 2 | HONEY BUNNY |
| 3 | QUICKEN TREE |

SEE THOROUGHBRED RACING
AT HOLLYWOOD PARK
APRIL 11 THROUGH JULY 23

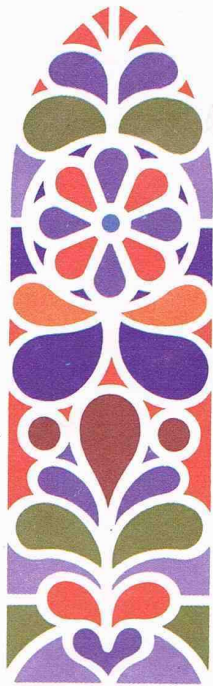
SHOW #2 - EAST BOUND

WIN

WIN

WIN





FOR THOSE
OF ALL FAITHS WHO
WISH TO JOIN
IN A TABLE GRACE



LAMA HO'OHUIHUI 'IA*

Premium Cocktails from the Proud Bird Cart
Le Continental Champagne
Premium varietal Wines:
Red—Gamay Beaujolais
White—Chenin Blanc
Beer

**Cocktails \$1.00 Wine 50¢ Beer 50¢*

WE ARE OFFERING TODAY * *

Crepes Foo Yung

(assorted Chinese vegetables and fluffy scrambled eggs are rolled in two tender crepes and topped with an oriental sauce.)

OR

Deluxe Cheeseburger
with tomato, dill pickle and onion garnish

Cottage Cheese and Pineapple Salad
French Dressing

Chocolate Ice Cream Sundae

***Service available at \$1.50*



Our group consisted of 49 persons including our hosts, Mr. & Mrs. Frances La Pointe. Frances is Executive Director of the Camp Commission of the Southern California - Arizona Conference of the United Methodist Church; Hawaii is a district within that Conference. Each year during the Christmas Holidays he directs this "Family Camp" at Camp Kailani on the Island of Oahu. Included in this year's group were six teenagers and three younger children. All were from Southern California except the Forkners and Mr. & Mrs. Marton Hicks, from Edmore, Michigan, very dear friends of ours.

Our meal aboard the plane was served with ease and efficiency and soon we were settled, watching our movie, "Eye of the Storm," with Mia Farrow.

First sight of land brought a flurry of excitement among the passengers and before we knew it we were there. By traveling westward we were beating the sun in a very small way.

A handsome young man placed the traditional lei about my neck, I received a kiss and in record time we were packaked aboard the "Camp Kailani Bus" and on our way to our quarters.

Our only regret was that the evening darkness had overtaken us ere we had left the city limits of Honolulu so that we could not enjoy the lovely scenery as we went "over the Pali" on our way to Camp.

But how we loved the fellowship within the bus!



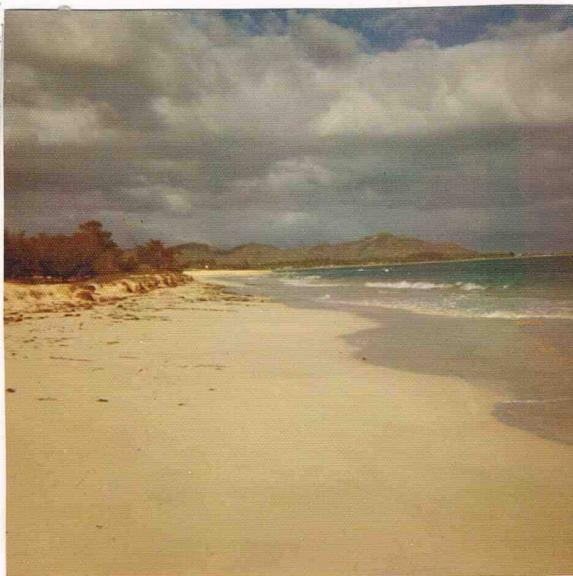
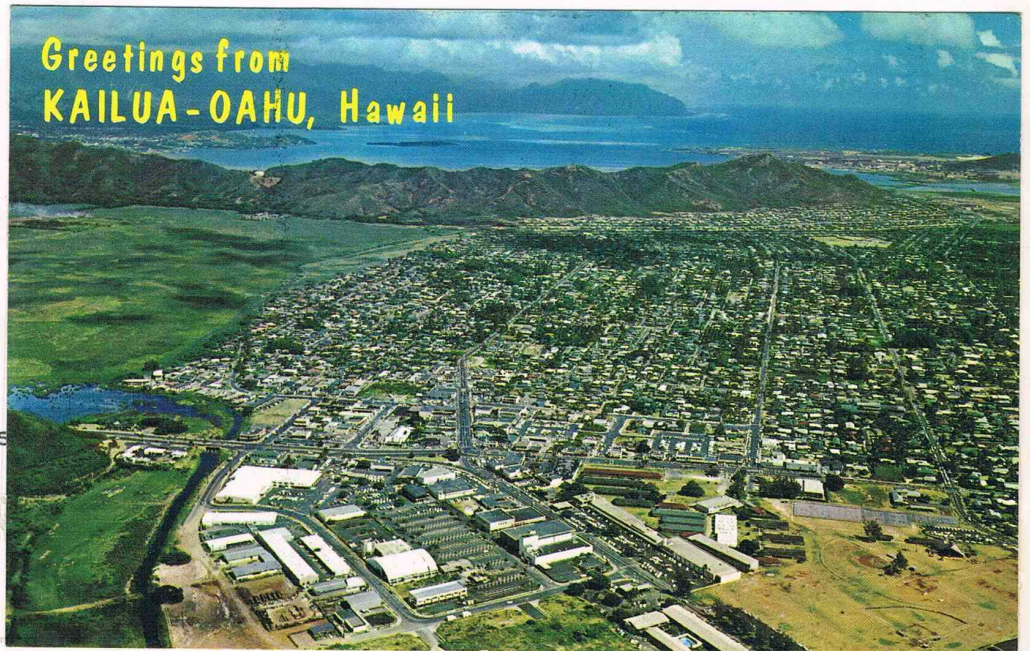
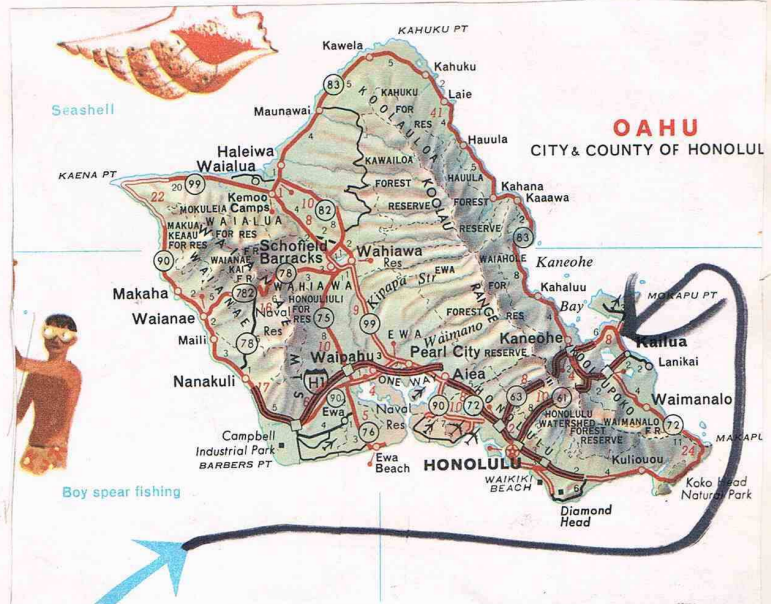
The group consisted of 13 members including our staff. The trip was organized by the Forest Service in cooperation with the U.S. Forest Service and the U.S. Forest Service. The trip was organized by the Forest Service in cooperation with the U.S. Forest Service and the U.S. Forest Service.



Kailua is about 30 miles from Honolulu on the windward side of the island of Oahu. Because of the descending darkness there was no sight-seeing that first evening in Hawaii. (However this didn't hinder the young folks; we could hear them inspecting the beach, anyway!)

Our wonderful cooks, the Creasars, who came as part of our group, put out a call for volunteer help. A good response made it possible for us to have our supper in a hurry. Nobody had to be coaxed to eat!

What a full day! But none seemed anxious to get to bed; we lingered in the dining room, getting acquainted. It was hard to believe we were 5000 miles from Grand Rapids! We and the other Michigan couple were assigned to share a comfortable apartment known as a guest cottage. While out cooking ventures didn't exceed a cup of tea, we did store some snacks and fruit juice in our "frig." The Hicks used our kitchen as a dressing room, which got hazardous once. The electric range was still hot from my morning cup of tea. Murt laid his nylon underwear on the burner and shortly had "hot pants." (Or I should say he had "melted briefs!")



| | |
|--|--|
| <p align="center"><u>UNITED METHODIST FAMILIES</u> CAMP KAILANI</p> <p>Dec. 21, 1972 to Jan. 2, 1973</p> | <p><u>Wednesday, 12/27</u> Pearl Harbor trip - A.M. - Sack Lunch - Visit Pacific Cemetery (Punchbowl) Temple Trip - Pali lookout Supper at Camp - Evening Campfire</p> |
| <p><u>Thursday, 12/21</u> Depart L.A. - Continental #607 - 12:20 PM - Lunch on Plane - Supper at Camp Campfire Get Acquainted</p> | <p><u>Thursday, 12/28</u> Free time Wash day at Kailua Lunch at Pohai Nani Excursion to Cultural Center (For those who wish) Supper for those who stay at camp.....</p> <p align="right"><i>2:00</i> <i>See J. M. pick up at Camp</i></p> |
| <p><u>Friday, 12/22</u> (All Bkfst. at Camp) Trip to Blowhole and Sea Life Park - Lunch at Camp - Supper "On the Beach" at Camp. Evening Fellowship: "The Butterworths" —</p> | <p><u>Friday, 12/29</u> Trip into Honolulu State Capitol - Iolani Palace Visit - Sack Lunch - Mission Compound - Farmer's Market International Craft shops Supper at Camp - - - Campfire —</p> |
| <p><u>Saturday, 12/23</u> Visit Kailua Christmas shopping - Post office call. Sack Lunch - Thru Kaneohe back into Honolulu Drive on Waterfront Visit and Supper at the Ala Moana Center</p> <p align="right"><i>Morning Center</i></p> | <p><u>Saturday, 12/30</u> Camp Devotions Morning on the Beach - Lunch at Camp - Over the Pali into Honolulu to do...? Supper at Camp - Talent night at Camp</p> |
| <p><u>Sunday, 12/24</u> To Wahiawa Church Lunch at Wahiawa with Samoans Afternoon at Bishop Museum Supper Christmas Eve at at Camp. the Kailua Church</p> | <p><u>Sunday, 12/31</u> "Up Early!" Coast Drive to Kahuka Church Service Lunch at Kahuka Back 'home' to rest a little! Buffet Supper Evening trip to 1st at the Camp. Church - Honolulu</p> |
| <p><u>CHRISTMAS</u> CHRISTMAS AT KAILANI Christmas Dinner at 'our' camp. Easy afternoon "Pick the Turkey" + Evening Devotions</p> | <p><u>NEW YEAR'S DAY</u> "Sleep late!!!!" Light Breakfast - - Free time. HAM DINNER FOR ALL..... One last swim...more letter writing. Evening snacks - Campfire Service.</p> |
| <p><u>Tuesday, 12/26</u> Hulu Hulu Show - City Zoo - Waikiki Beach - Sack lunch at the park - Paradise Park Visit Supper at Camp..... Evening Campfire</p> | <p><u>Tuesday, 1/2</u> Break Camp - Pack "All A-board for last bus trip." - Sack lunch - Leave On Continental #602 - Out at 1:45 P.M. Arrive L.A. at 8:45 P.M. - ALOHA -</p> |

All beach in Hawaii is Public. A fence ran across the rear of the Camp Ground. All we had to do was step through a gate, cross a grassy area to a lovely white sand beach.

We learned the Camp Ground had been purchased from the U. S. Government at the close of World War II. It had been used as an R & R (Rest and Relaxation) Center for servicemen in the Pacific Combat Zone.

The first morning all of us, but especially the children and teenagers were up early inspecting and exploring the place. Our apartment was nearest the ocean. How nice to be able to listen to the surf all night.

At mealtimes we all pitched in, both with getting the food on and in clean-up chores. Thus our cooks could accompany us on our sight-seeing trips. Mealtimes were happy, relaxed occasions. We tried to change our positions at the table each meal, thus we got better acquainted. For the most part the food was simple but there was an abundance of it. Always, always there was the luscious, sweet, juicy, fresh pineapple. No wonder I returned from the vacation with an additional 15 lbs.

We enjoyed several informal times about a dining room fireplace in the evenings. One evening Rev. Butterworth, Dist. Supt., spoke to us of the History of the Islands and the peoples. Stanley led a devotional service another time. A hilarious talent show was a real hit. On the concluding evening our leader shared with us something of the history of Camping in S. Calif. Conference.



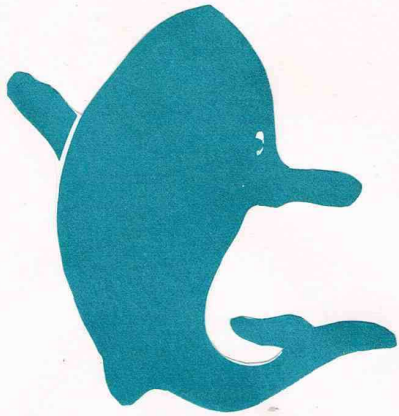
Our Camp Directors: Mr. Frances La Pointe (Busy with Breakfast) and Carletta (far end, facing camera)



Our youngest Camper: Gina Munro age 6 (at right)

Our oldest Camper: Carl Payson (at left) age 80 (plus)

These two and 47 in between participated in all camp activities!



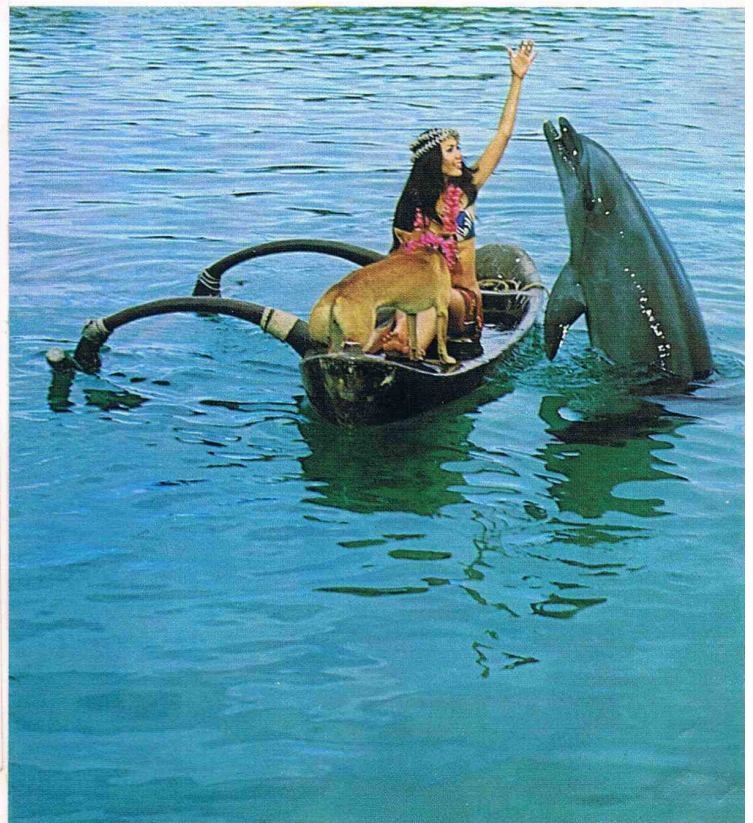
Hawaii's Sea Life Park is a spectacular Marine life Exhibit overlooking the ocean near Waimanolo. Five beautiful pools contain large collections of Marine Life. A replica of a whaling vessel is anchored in "Whaler's Cove." Here a trained whale performs. Also for the tourist is the Hawaiian Sea Pageant, featuring porpoises. At another spot seals delight the visitors, especially the children. Nearby, offshore, is a section of the Oceanographic research where we observed several objects we were told were vehicles used to explore the briny deep.

While at this point, no tourist should miss seeing the "Blow Hole" a few miles further near Makapuu point. A large hole or "lava tube" as it is properly called, causes an interesting phenomena to take place. When the wind is strong, incoming waves create a monstrous geyser-like action, forcing the sea water up through the tube. It's worth seeing and you will always remember it.



Hawaii's *Park* Sea Life Park

By day and by night...



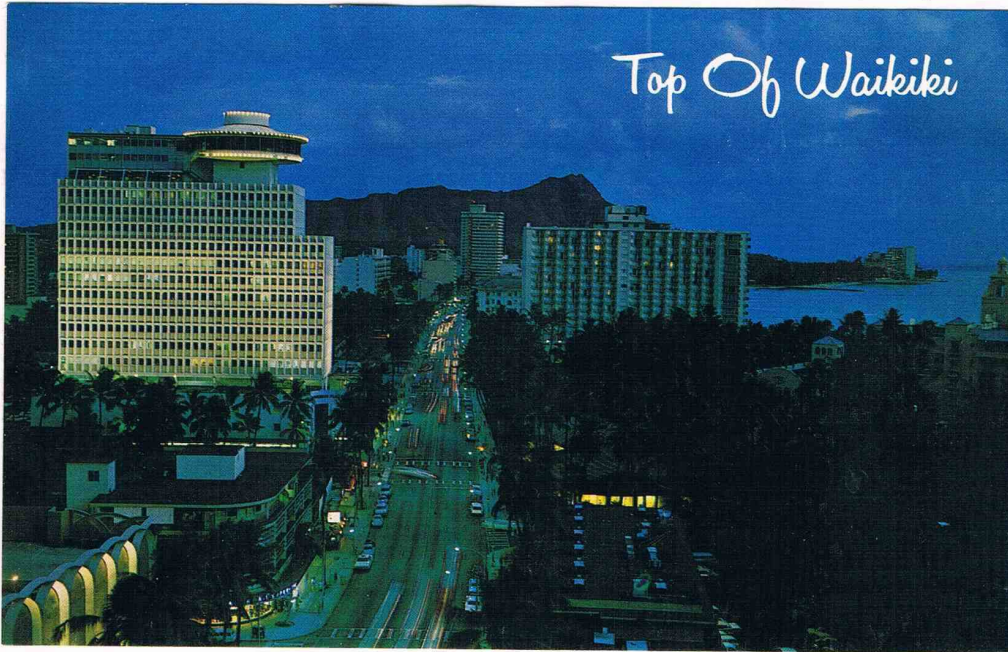
ALA MOANA



What a Shopping Center! Undoubtedly the most beautiful we have ever seen and the more so for us because all was decorated for the Holidays!

Three levels offer a variety of shops, restaurants, gardens, pools, fountains, sculpture and music. Even a McDonald's, busy as any we ever saw on the Mainland, is found here on the lower level. Products and Craft items from all over the Pacific may be purchased here in more than 200 stores.

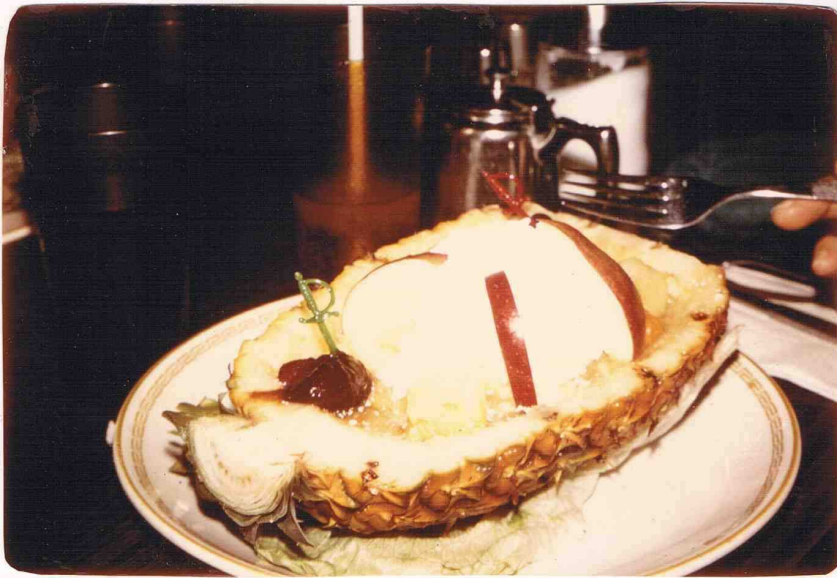
Beware of uncomfortable shoes! You'll want to cover it all and it can scarcely be done, even in sneakers.



The Hicks and Forkners dined "in the sky." Daytime turned to darkness as we revolved. Here I ate "Mahimahi," delicious fried dolphin. We will never forget this pleasant eating experience.



Ala Moana Center, owned and managed by Dillingham Corporation, is located strategically between Waikiki and Honolulu. The aerial photograph above shows the Top Level parking spaces surrounding the Center. Ala Moana has a total of 7,800 parking stalls, providing plenty of free parking. —Camera Hawaii photo.



To stroll up and down Kalakana Blvd. opposite Waikiki Beach is such a delightful experience that one ought to allow several days for it. Be sure to order Pineapple Boats for lunch. Stanley and Murt endorse Macadamia Nut Pie.

Much of interest may be found in Kapiolani Park, farther down beyond Waikiki. We took a brief swing through the Honolulu Zoo, as well as the Waikiki Aquarium where we observed exhibits of tropical

fish we had never seen before. We declared it the finest. The Kodah Company offers a very splendid, authentic Hula Show several times daily only a few feet from Waikiki Beach. We found the waiting lane impossibly long and didn't care to wait in the blistering sun so skipped it. Most of our group did wait, however and reported it very well worth while. It is arranged especially for the shutterbug.



Our ladies in their Mumus.

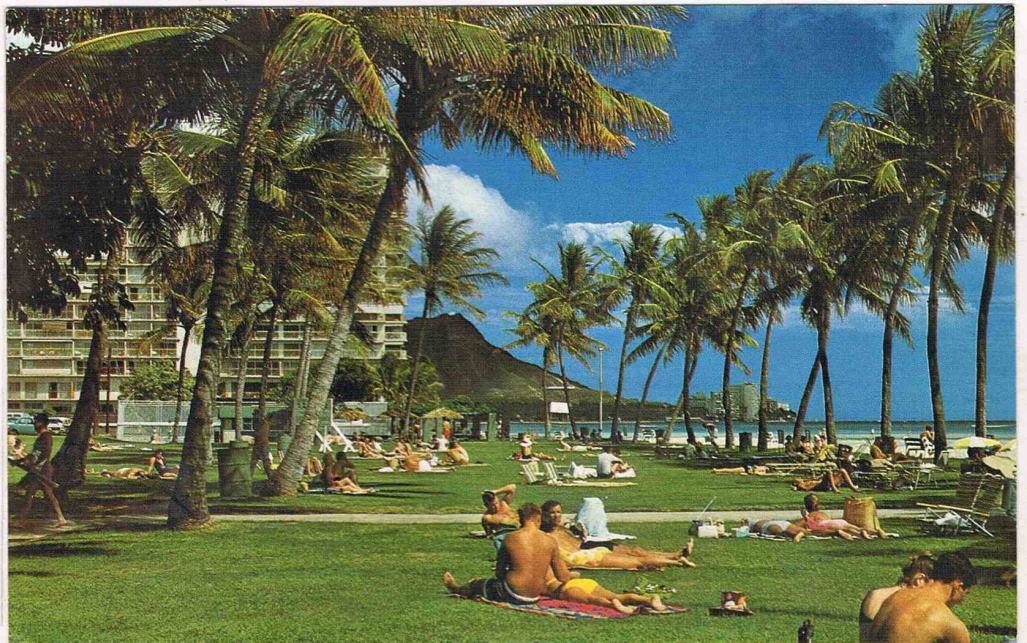


Wanna rent a surf board?

Right--

Fort DeRussey is the Rest and Recuperation Complex for Military personnel and their families in Hawaii.

World famous Diamond Head provides a back drop for this picture.





Welcome to Pearl Harbor

Harbors

TO THE MEMORY OF THE GALLANT MEN
 HERE ENTOMBED AND THEIR SUPPLEMENTS
 WHO GAVE THEIR LIVES IN ACTION
 ON DECEMBER 7 1941 ON THE
 USS ARIZONA

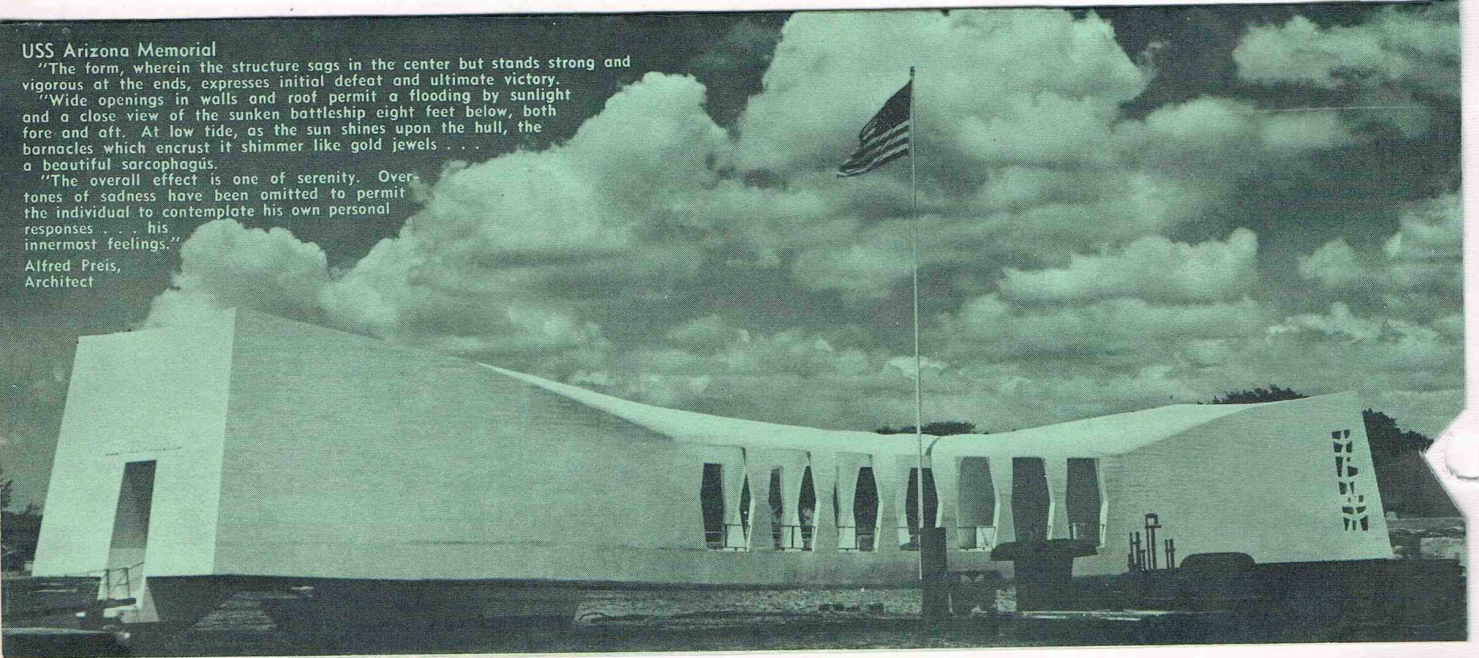
| UNITED STATES NAVY | UNITED STATES NAVY |
|---------------------|---------------------|
| 1. 1. 1. 1. | 1. 1. 1. 1. |
| 2. 2. 2. 2. | 2. 2. 2. 2. |
| 3. 3. 3. 3. | 3. 3. 3. 3. |
| 4. 4. 4. 4. | 4. 4. 4. 4. |
| 5. 5. 5. 5. | 5. 5. 5. 5. |
| 6. 6. 6. 6. | 6. 6. 6. 6. |
| 7. 7. 7. 7. | 7. 7. 7. 7. |
| 8. 8. 8. 8. | 8. 8. 8. 8. |
| 9. 9. 9. 9. | 9. 9. 9. 9. |
| 10. 10. 10. 10. | 10. 10. 10. 10. |
| 11. 11. 11. 11. | 11. 11. 11. 11. |
| 12. 12. 12. 12. | 12. 12. 12. 12. |
| 13. 13. 13. 13. | 13. 13. 13. 13. |
| 14. 14. 14. 14. | 14. 14. 14. 14. |
| 15. 15. 15. 15. | 15. 15. 15. 15. |
| 16. 16. 16. 16. | 16. 16. 16. 16. |
| 17. 17. 17. 17. | 17. 17. 17. 17. |
| 18. 18. 18. 18. | 18. 18. 18. 18. |
| 19. 19. 19. 19. | 19. 19. 19. 19. |
| 20. 20. 20. 20. | 20. 20. 20. 20. |
| 21. 21. 21. 21. | 21. 21. 21. 21. |
| 22. 22. 22. 22. | 22. 22. 22. 22. |
| 23. 23. 23. 23. | 23. 23. 23. 23. |
| 24. 24. 24. 24. | 24. 24. 24. 24. |
| 25. 25. 25. 25. | 25. 25. 25. 25. |
| 26. 26. 26. 26. | 26. 26. 26. 26. |
| 27. 27. 27. 27. | 27. 27. 27. 27. |
| 28. 28. 28. 28. | 28. 28. 28. 28. |
| 29. 29. 29. 29. | 29. 29. 29. 29. |
| 30. 30. 30. 30. | 30. 30. 30. 30. |
| 31. 31. 31. 31. | 31. 31. 31. 31. |
| 32. 32. 32. 32. | 32. 32. 32. 32. |
| 33. 33. 33. 33. | 33. 33. 33. 33. |
| 34. 34. 34. 34. | 34. 34. 34. 34. |
| 35. 35. 35. 35. | 35. 35. 35. 35. |
| 36. 36. 36. 36. | 36. 36. 36. 36. |
| 37. 37. 37. 37. | 37. 37. 37. 37. |
| 38. 38. 38. 38. | 38. 38. 38. 38. |
| 39. 39. 39. 39. | 39. 39. 39. 39. |
| 40. 40. 40. 40. | 40. 40. 40. 40. |
| 41. 41. 41. 41. | 41. 41. 41. 41. |
| 42. 42. 42. 42. | 42. 42. 42. 42. |
| 43. 43. 43. 43. | 43. 43. 43. 43. |
| 44. 44. 44. 44. | 44. 44. 44. 44. |
| 45. 45. 45. 45. | 45. 45. 45. 45. |
| 46. 46. 46. 46. | 46. 46. 46. 46. |
| 47. 47. 47. 47. | 47. 47. 47. 47. |
| 48. 48. 48. 48. | 48. 48. 48. 48. |
| 49. 49. 49. 49. | 49. 49. 49. 49. |
| 50. 50. 50. 50. | 50. 50. 50. 50. |
| 51. 51. 51. 51. | 51. 51. 51. 51. |
| 52. 52. 52. 52. | 52. 52. 52. 52. |
| 53. 53. 53. 53. | 53. 53. 53. 53. |
| 54. 54. 54. 54. | 54. 54. 54. 54. |
| 55. 55. 55. 55. | 55. 55. 55. 55. |
| 56. 56. 56. 56. | 56. 56. 56. 56. |
| 57. 57. 57. 57. | 57. 57. 57. 57. |
| 58. 58. 58. 58. | 58. 58. 58. 58. |
| 59. 59. 59. 59. | 59. 59. 59. 59. |
| 60. 60. 60. 60. | 60. 60. 60. 60. |
| 61. 61. 61. 61. | 61. 61. 61. 61. |
| 62. 62. 62. 62. | 62. 62. 62. 62. |
| 63. 63. 63. 63. | 63. 63. 63. 63. |
| 64. 64. 64. 64. | 64. 64. 64. 64. |
| 65. 65. 65. 65. | 65. 65. 65. 65. |
| 66. 66. 66. 66. | 66. 66. 66. 66. |
| 67. 67. 67. 67. | 67. 67. 67. 67. |
| 68. 68. 68. 68. | 68. 68. 68. 68. |
| 69. 69. 69. 69. | 69. 69. 69. 69. |
| 70. 70. 70. 70. | 70. 70. 70. 70. |
| 71. 71. 71. 71. | 71. 71. 71. 71. |
| 72. 72. 72. 72. | 72. 72. 72. 72. |
| 73. 73. 73. 73. | 73. 73. 73. 73. |
| 74. 74. 74. 74. | 74. 74. 74. 74. |
| 75. 75. 75. 75. | 75. 75. 75. 75. |
| 76. 76. 76. 76. | 76. 76. 76. 76. |
| 77. 77. 77. 77. | 77. 77. 77. 77. |
| 78. 78. 78. 78. | 78. 78. 78. 78. |
| 79. 79. 79. 79. | 79. 79. 79. 79. |
| 80. 80. 80. 80. | 80. 80. 80. 80. |
| 81. 81. 81. 81. | 81. 81. 81. 81. |
| 82. 82. 82. 82. | 82. 82. 82. 82. |
| 83. 83. 83. 83. | 83. 83. 83. 83. |
| 84. 84. 84. 84. | 84. 84. 84. 84. |
| 85. 85. 85. 85. | 85. 85. 85. 85. |
| 86. 86. 86. 86. | 86. 86. 86. 86. |
| 87. 87. 87. 87. | 87. 87. 87. 87. |
| 88. 88. 88. 88. | 88. 88. 88. 88. |
| 89. 89. 89. 89. | 89. 89. 89. 89. |
| 90. 90. 90. 90. | 90. 90. 90. 90. |
| 91. 91. 91. 91. | 91. 91. 91. 91. |
| 92. 92. 92. 92. | 92. 92. 92. 92. |
| 93. 93. 93. 93. | 93. 93. 93. 93. |
| 94. 94. 94. 94. | 94. 94. 94. 94. |
| 95. 95. 95. 95. | 95. 95. 95. 95. |
| 96. 96. 96. 96. | 96. 96. 96. 96. |
| 97. 97. 97. 97. | 97. 97. 97. 97. |
| 98. 98. 98. 98. | 98. 98. 98. 98. |
| 99. 99. 99. 99. | 99. 99. 99. 99. |
| 100. 100. 100. 100. | 100. 100. 100. 100. |

USS Arizona Memorial

"The form, wherein the structure sags in the center but stands strong and vigorous at the ends, expresses initial defeat and ultimate victory. Wide openings in walls and roof permit a flooding by sunlight and a close view of the sunken battleship eight feet below, both fore and aft. At low tide, as the sun shines upon the hull, the barnacles which encrust it shimmer like gold jewels . . . a beautiful sarcophagus."

"The overall effect is one of serenity. Over tones of sadness have been omitted to permit the individual to contemplate his own personal responses . . . his innermost feelings."

Alfred Preis, Architect

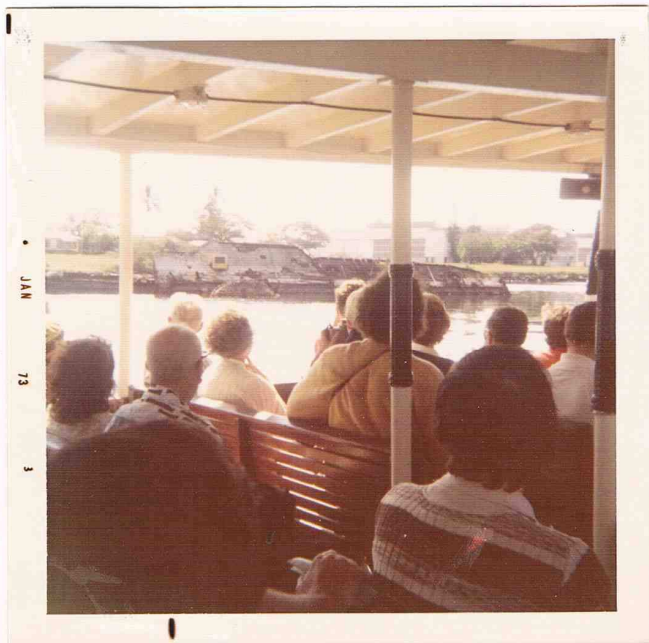


PEARL HARBOR

Because this is the most popular of all Tourist Attractions about the area, there are long lines of people awaiting boats, traffic jams outside the gates and some general confusion reigning about. Tickets must be used the day they are issued, perhaps only hours before, my memory fails me here. Anyway our dear Carletta went in early and secured the necessary tickets.

It is a trip you'll not want to miss. To stand within the walls of the Memorial and gaze into the water where the ruins of the Arizona lies undisturbed since 1941 causes some serious reflection as to how far we have or have not come since that fateful day. Have we succeeded in getting along with other peoples of the world any better? We saw many young Japanese tourists here and this did my heart good. How we must pray that a new generation of youth the world over will succeed in convincing this myriad of various governments that they are determined not to "know war any more."

Standing before the long list of hundreds of men who perished on that spot I searched until I came to the name of "Miller." Two young men, brothers, both from my home town of Ostrander were serving on the Arizona that Dec. 7, 1941. I was not a close friend of either of them but they were acquaintances.



HISTORY CENTER OF HAWAII

To all who argue that a Museum is a Museum is a Museum, we'd have to say that this one really is different. This collection earned its reputation by claiming to house the world's finest examples of "Hawaiiana," portraying cultural and artistic features of the ancient peoples of the Pacific.

Extensive displays of Feather Capes, helmets, hahilis and other outstanding examples of Hawaiian Art may be viewed in beautiful surroundings. We were drawn to materials dealing with the Hawaiian religions prior to the influx of Western Missionaries. Another interesting display is a large mural map depicting the migration of peoples into the Pacific Islands.

MISSION HOUSES MUSEUM

The delightful young lady who guided us through this interesting place excelled any other such guide we could recall. Her charm and pleasant, relaxed air made us feel we had been her only customers all day!

It includes the oldest frame house in Hawaii, built in 1821 by American Protestant Missionaries and used as headquarters and home for many Missionaries until 1896.

Many of the original furnishings, so beautifully restored, remain for us to see. Old clothing and accessories, household gadgets and hand-crafted items add to the fascination.

Adjoining is the Printing House, used by early missionaries, not merely for printing religious materials but to produce simple spelling books and readers to aid in literary programs. Our guide illustrated the operation of the Press, an exact replica of the first one on the Islands.

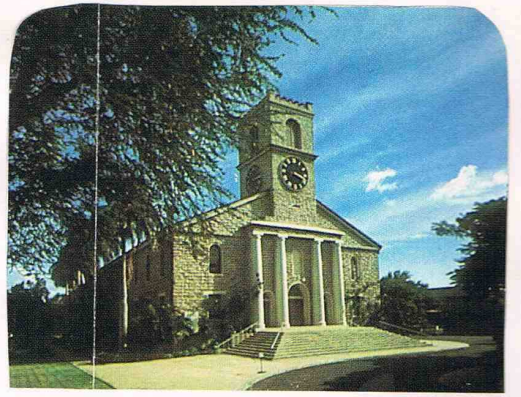


KAWAIAHAO CHURCH

Nearby the Mission House Museum we visited Kawaihāo Church, Honolulu's oldest Church, erected in 1841. It was the Royal Chapel of Hawaiian Rulers at one time and used for many religious and civic events including coronations.

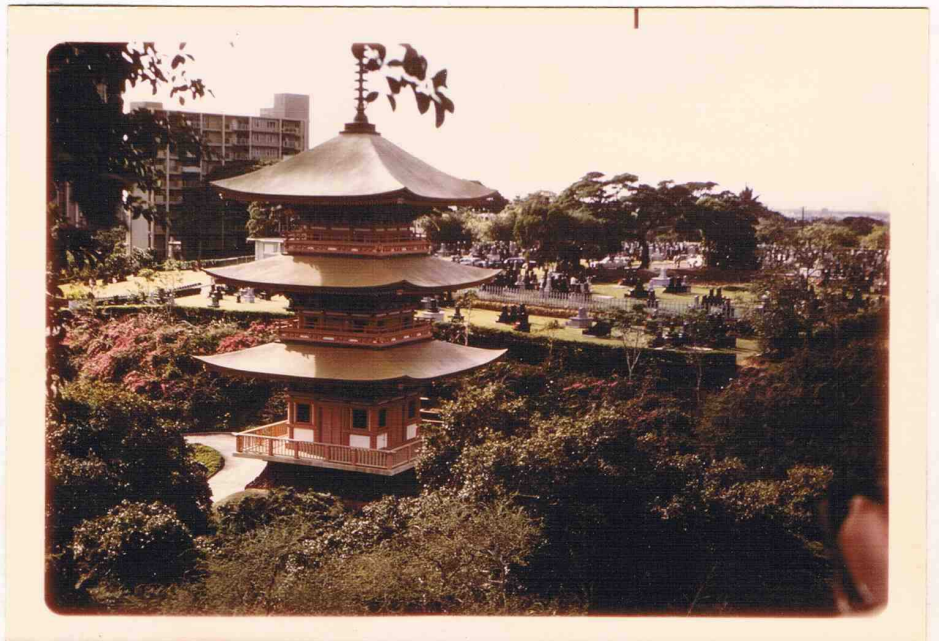
Within the courtyard is the tomb of King Lunalilo, buried there in 1875.

Sunday Services in the beautiful old stone Church are conducted each week in both English and Hawaiian.

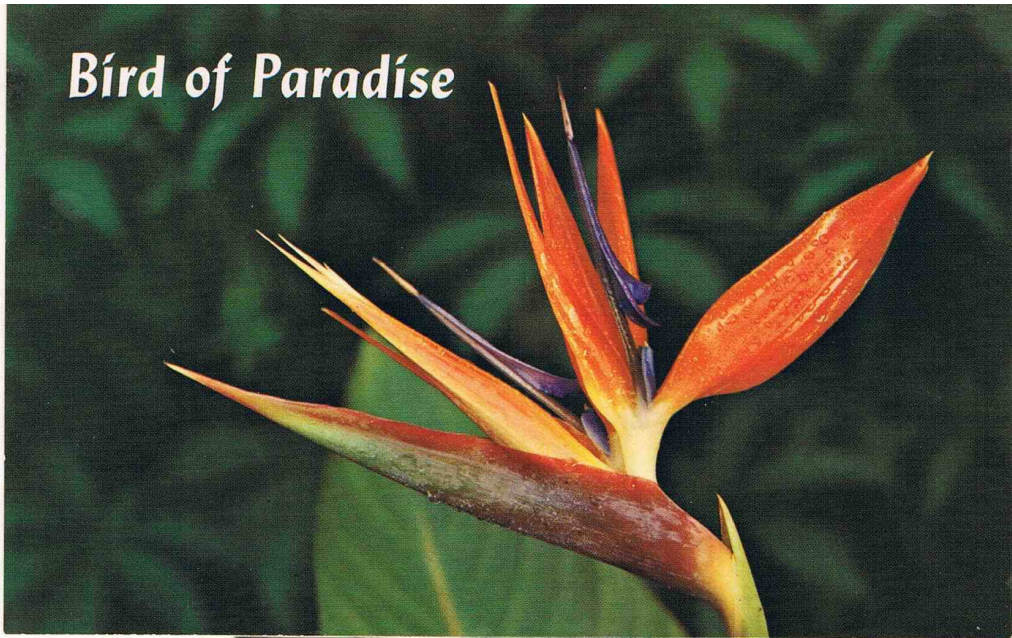


EVERYBODY'S feet give out occasionally

As we came by bus from our Camp Ground into Honolulu many times, we usually entered the city past this picturesque Japanese Pagoda.



Bird of Paradise



WHITE
PLUMERIAS →

OPPOSITE PAGE

PINK
PLUMERIAS



WHITE
GINGER,
ONE OF
HAWAII'S
MOST
DELICATE
FRAGRANCES

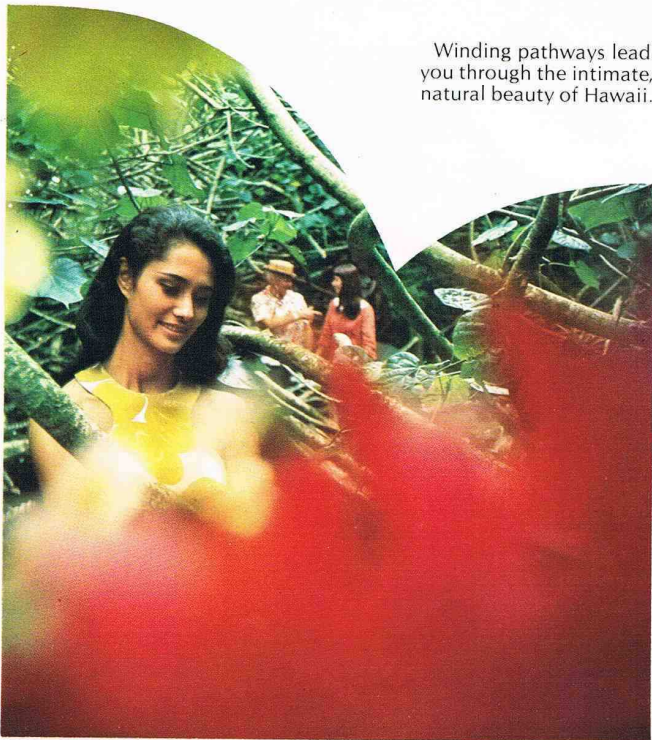
PARADISE PARK

It's easy to see how this gorgeous spot has been nicknamed "Shutterbug Heaven. Only a few miles from downtown Honolulu, the intimate natural beauty of this park brings a wonderful feeling that one has been transplanted far, far from the busy metropolis.

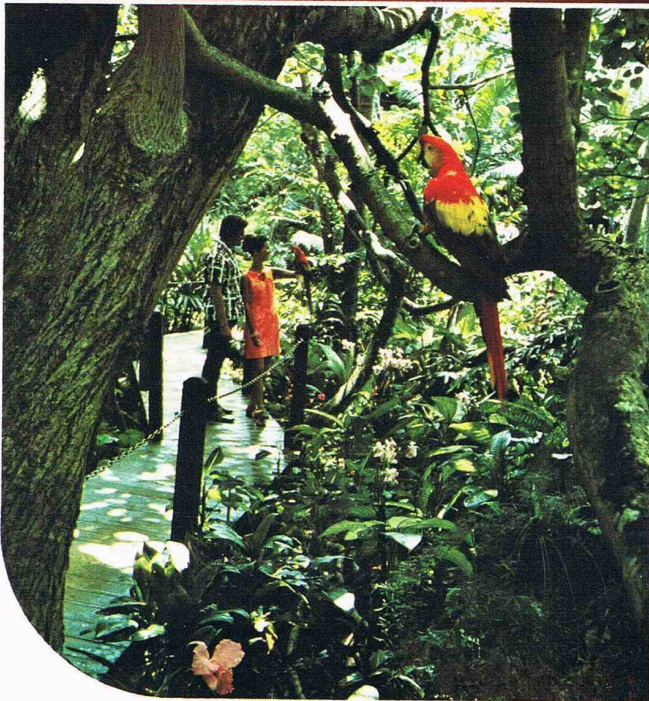
We particularly appreciated our stroll through the Bamboo Forest and the Jungle trail among the Banyan Trees.

The afternoon in this exotic garden came to an end far too soon.

The performing birds delighted the audience, young and old alike.

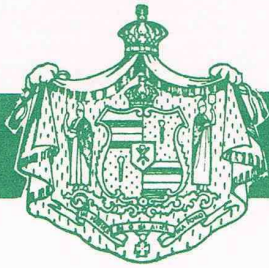


Winding pathways lead you through the intimate, natural beauty of Hawaii.



Hibiscus

Darkney



UA MAU KE EA O KA AINA I KA PONO

*The Life of the Land Is
Perpetuated in Righteousness*

IOLANI PALACE

HONOLULU, HAWAII



IOLANI PALACE

Hawaii lays claim to being the only state in the Union possessing a Palace. The original structure was built on the same sight in 1845, the present one in 1879. "Iolani" may be translated to mean "Bird of Heaven, and signifies to the Hawaiians the supreme being above all gods.

At the present time it is in a period of restoration so very little of it is open for public viewing.

The day we visited here we saw the first of great hordes of Japanese Visitors, here for the New Year Celebration. They looked prosperous and healthy and were having a



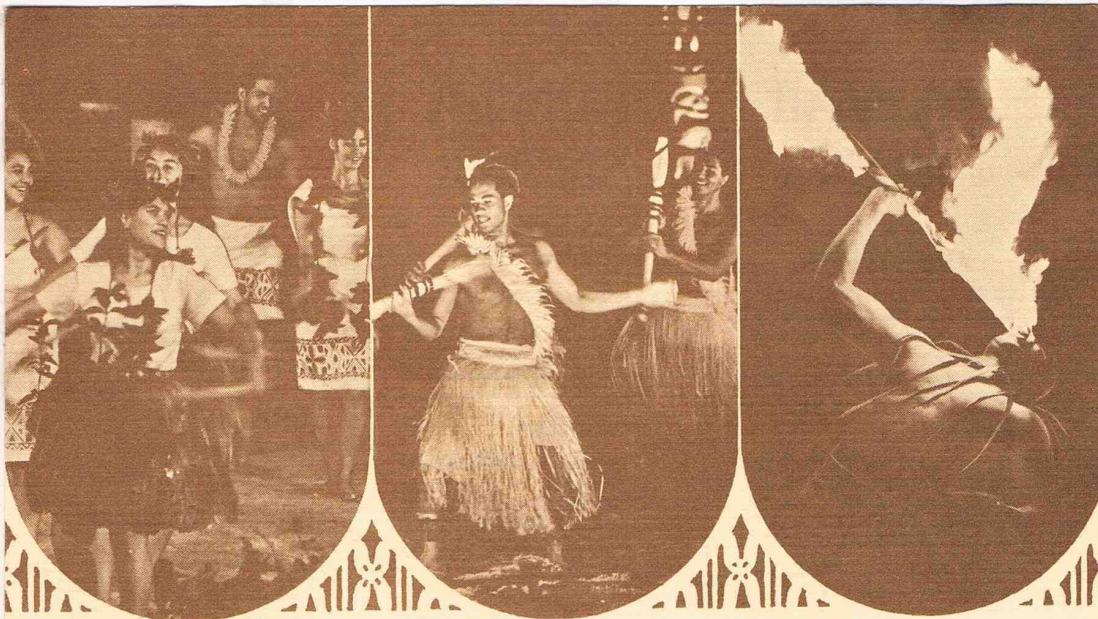
wonderful time.

Directly adjacent to the Palace is the largest Banyan Tree we saw anywhere on the island. It is believed Queen Kapiolani planted it in 1882.

It is a delight to stroll the impressive Capitol Building, made to reflect all the elements of Hawaii. Reflecting pools surround the impressive structure and elevators lift the visitors to an open crown designed to resemble a volcano. A fine view of the city is available here.



STANDARD B & P "N"



THE POLYNESIAN CULTURAL CENTER presents

Yasbues

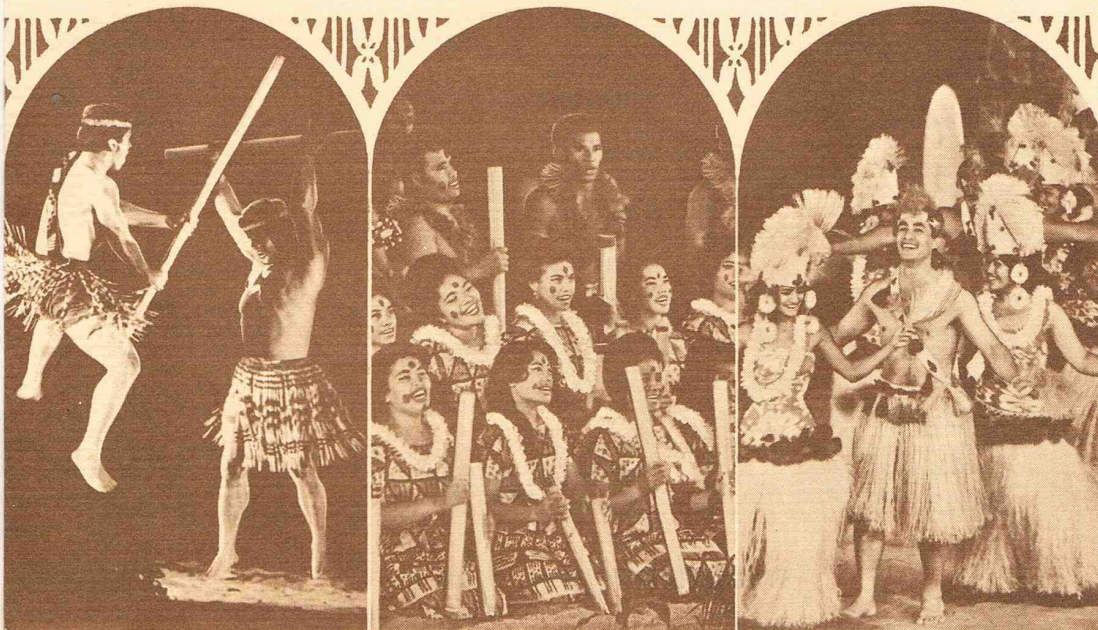
"INVITATION TO PARADISE"

Directed by WARD ELLIS

Associate Director—ROD ANDERSON Theater and Company Manager—SAMUELA LANGI

Lights—W. WARREN TRUEBLOOD SOUND—ALBERT PETERS

Overture Music—JACK DEMELLO



VILLAGE ADMISSION

The Living Villages

POLYNESIAN CULTURAL CENTER
LAIE, HAWAII



OPEN 10:30 A.M.

463229

NO EXCHANGE
NO REFUND

STAND

HIBISCUS BUFFET

Dining in Polynesia

POLYNESIAN CULTURAL CENTER
LAIE, HAWAII



266930

NO EXCHANGE
NO REFUND



POLYNESIAN CULTURAL CENTER

hereby awards this rare and highly valuable

Distinguished Visitor Certificate

to **The Honorable**



NEW ZEALAND



TONGA



SAMOA



TAHITI

HAWAII

the above person of superior worth, having fulfilled a lifelong desire to "escape to paradise", is herewith accorded

all of the privileges, honors and accolades rightly and

justly due a person who has escaped to paradise.

12/26/72

F.R. LARSEN





POLYNESIAN CULTURAL CENTER

This trip is a must for those tourists who desire a basic historic and cultural knowledge of the areas wherein they travel. It will set you back a few dollars but everyone I have talked to about it agree that it was the most delightful of all side trips.

A stroll through the six villages, Hawaii, Tonga, Samoa, Maori, Fiji and Tahiti develops a new appreciation for all the cultural contributions these various ethnic groups have made to the Islands.

The afternoon water show or pageant is but a small prelude to the gorgeous spectacular ahead in the evening.

One does not think of quilting as being a craft practiced in the South Sea Islands but this old lady had a dozen masterpieces on display and the work was exquisite.

This activity will require most of a day from Noon until midnight.

At the Hibiscus Buffet I had my first "poi."





HAWAII MANUFACTURING CENTER



お買い徳

ハワイ

マニファクチュアリング

センター製品を

HAWAII MANUFACTURING CENTER

HAWAII

MANUFACTURING

CENTER

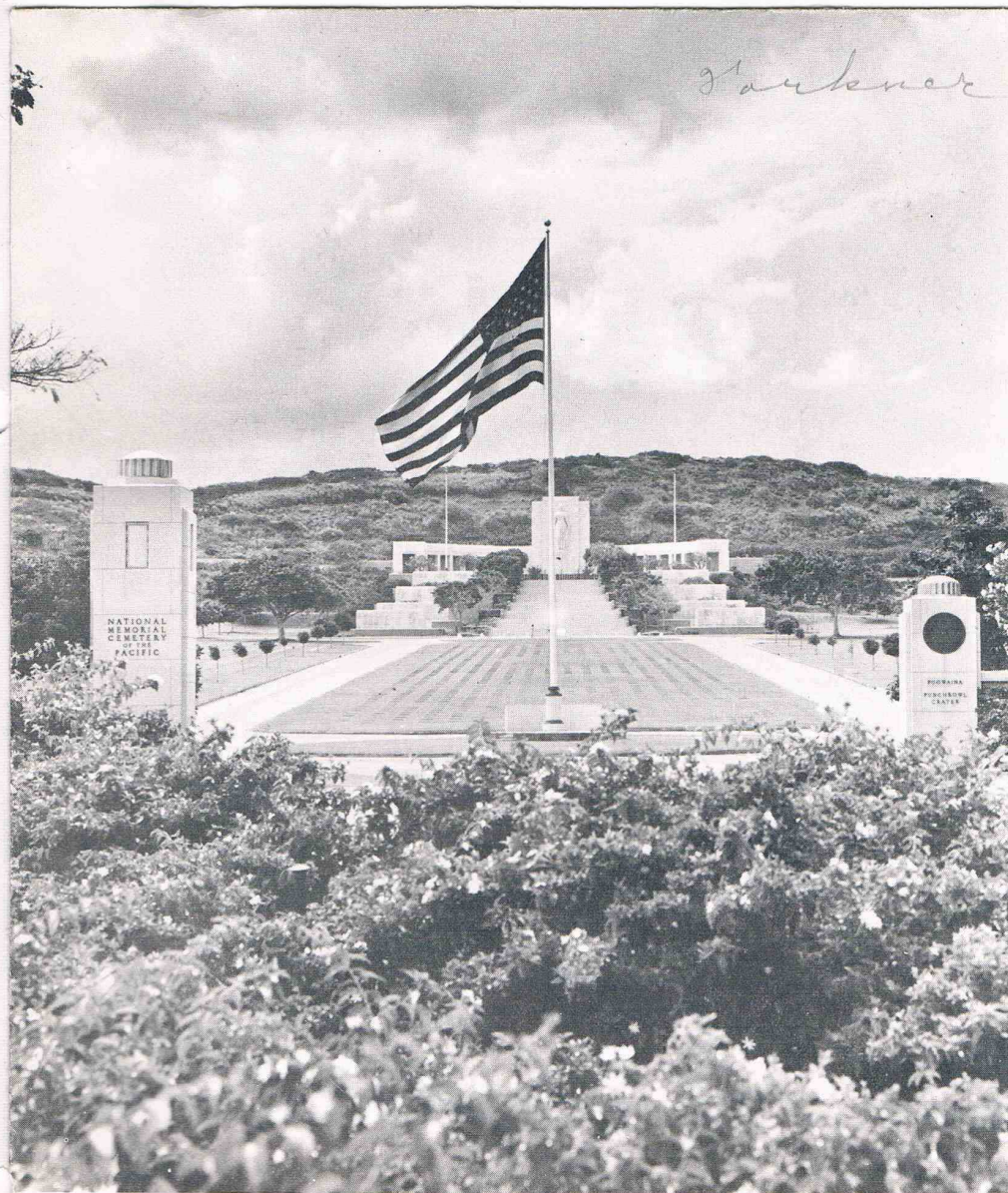
This very worthwhile side trip was not originally included in our group plans. Were we ever grateful our leader thought to add it on!

Because it was our first stop at a fair-sized shopping spot we had to stifle the urge to spend freely. Besides, we were reminded, we were on our way to the famous Ala Moana Shopping Center.

Here we also saw our first Hula Show. It included lovely young ladies and also some adorable children. The shop was designed with the large entertainment platform in the center, completely encircled with sales area. A second floor all around the sides afforded choice viewing from the balcony.

A wealth of merchandise was on display here, not junk, but nicely crafted and reasonably priced. I bought a Hawaiian doll for my collection, also some appealing note paper.

Now that the whole trip is over, I honestly believe the Hula show here was the best we saw anywhere in the Islands.



NATIONAL MEMORIAL CEMETERY
of the Pacific
 PUNCHBOWL CRATER
 HONOLULU, HAWAII

One could almost certainly tell which members of our group had served in World War II if their conduct was observed at this spot. Veterans strolled about slowly, quietly, reading the historical markers careful

The Cemetery was established in 1948. As of June 30, 1972 a total of 22,865 burials have taken place here. 2,020 are of of unknowns!

Punchbowl Crater is a huge extinct volcano crater, one of three on the island of Oahu. It is estimated that it last erupted 75,000 years ago.

To look out over the great sea of graves, marked with but single concrete slabs cannot be described adequately, it must be experienced.

An Easter Sunrise service is held each year at the Cemetery. On Memorial Day the School Children of Hawaii contribute floral leis which are placed on the graves by the Boy Scouts of the area. Also each gravesite is decorated with a small flag, on Memorial Day and removed immediately after.



BAPISTRY IN NEW CHURCH



"OLD CHURCH"

OLD FRIENDS

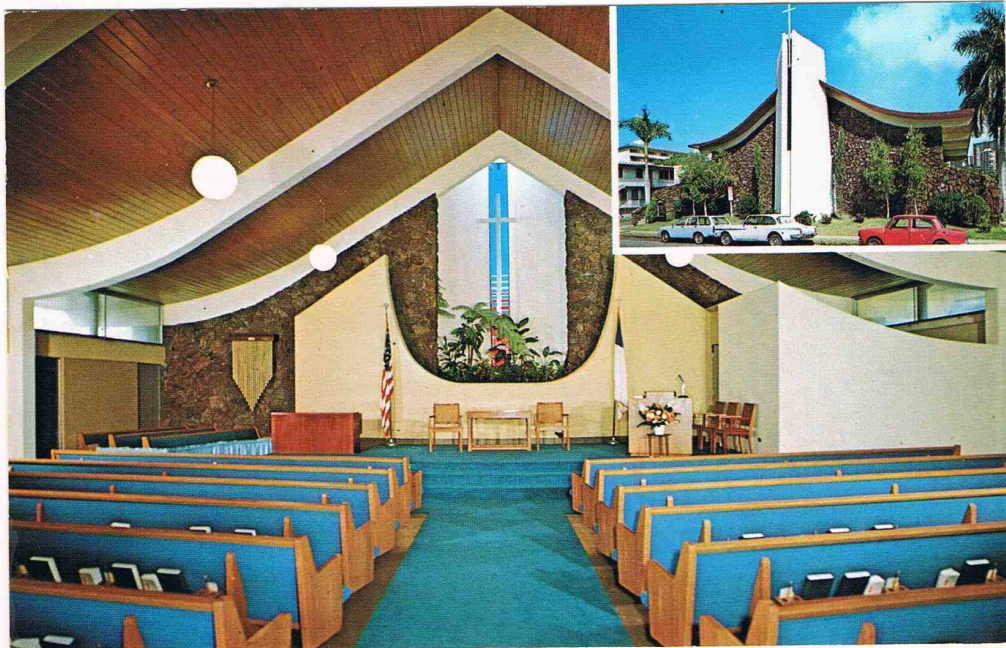
As we had prepared for this trip, it had occurred to me that it differed from other jaunts we had taken in years past in that we did not know anyone at all in Hawaii. When we reached my sister's home and mentioned this she reminded that an old friend from Ostrander, Ohio, where I grew up was a minister in Honolulu.

A telephone call from the Ala Moana Shopping Center confirmed this information and a date was set for our "reunion."

George and I had dated when I was out of high school, about 18 I guess. I recall that I had gotten quite serious and grieved for a short while when I heard no more from him....all of this was 35 or 40 years ago.

It was a real pleasure to meet this man and his charming wife. They have been in Hawaii for 18 or 20 years I believe. He is retired from the navy and is Pastor of the First Christian Church of Honolulu. They took us out to the finest Chinese Restaurant imaginable. After dinner we visited a while in their home. Their only son, aged 22, was back on the mainland in school now.

These friends were already planning to retire from their church and return to Georgetown Kentucky, where they are no doubt already at home.



NOTICE
AN INVITATION TO
KING'S ALLEY

Harper

WAIKIKI



IT'S FUN AND IT'S FREE!

You are invited to stroll the shaded cobblestone alleys of King's Alley Waikiki. You'll discover a myriad of intimate shoppes, skilled craftsmen at work, a festive flea market, a charming English pub, restaurants and more. Even the old-world pageantry of the Changing-of-the-Guard ceremony each evening at 7 p.m. King's Alley is a Hawaiian Renaissance; a shopping festival in the Monarchy manner!



KING'S ALLEY WAIKIKI

HOURS: 9:00 a.m. to 11:00 p.m.
Opposite the Sheraton's Princess Kaiulani
Hotel, one short block from Kalakaua
Avenue in Waikiki.

STANDARD B & P "NOISEAR"

STANDARD B & P "NOISEAR"

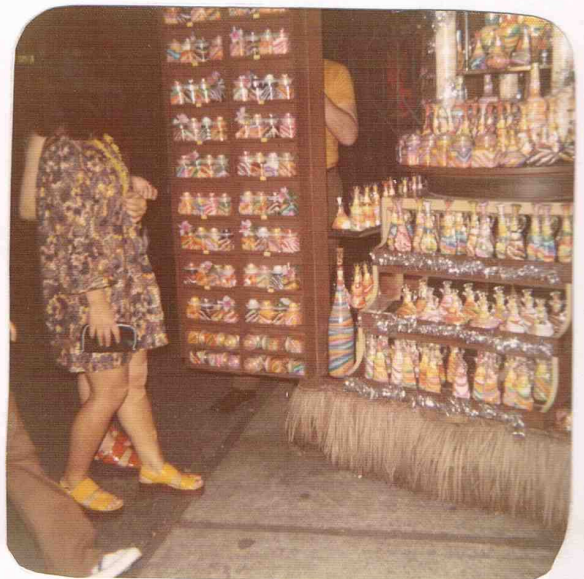
THE
INTERNATIONAL
MARKETPLACE



Speaking strictly from my own viewpoint, it seemed the International Market Place rated somewhat above the ordinary "tourist traps" we see about all the vacation spots on the mainland. One can easily spend hours (and dollars too) meandering about the area, inspecting all of the various craft and artistic items assembled from the far corners of the Pacific.

Most of the gifts which I brought home with me came from this spot. We returned two or three times when nothing else was on the calendar just to roam about and "browse."

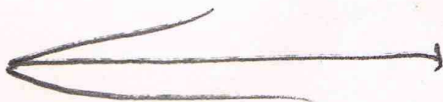
It is always interesting to find something particularly peculiar to the area where you find yourself. Something never seen in any other place we had traveled. In the shopping centers in Hawaii it was the various jars, decanters and apothecary jars filled with layers of beautiful colored sugar. We found them on the tables in a few restaurants and also learned they are used as gifts occasionally. They really caught and held my attention.

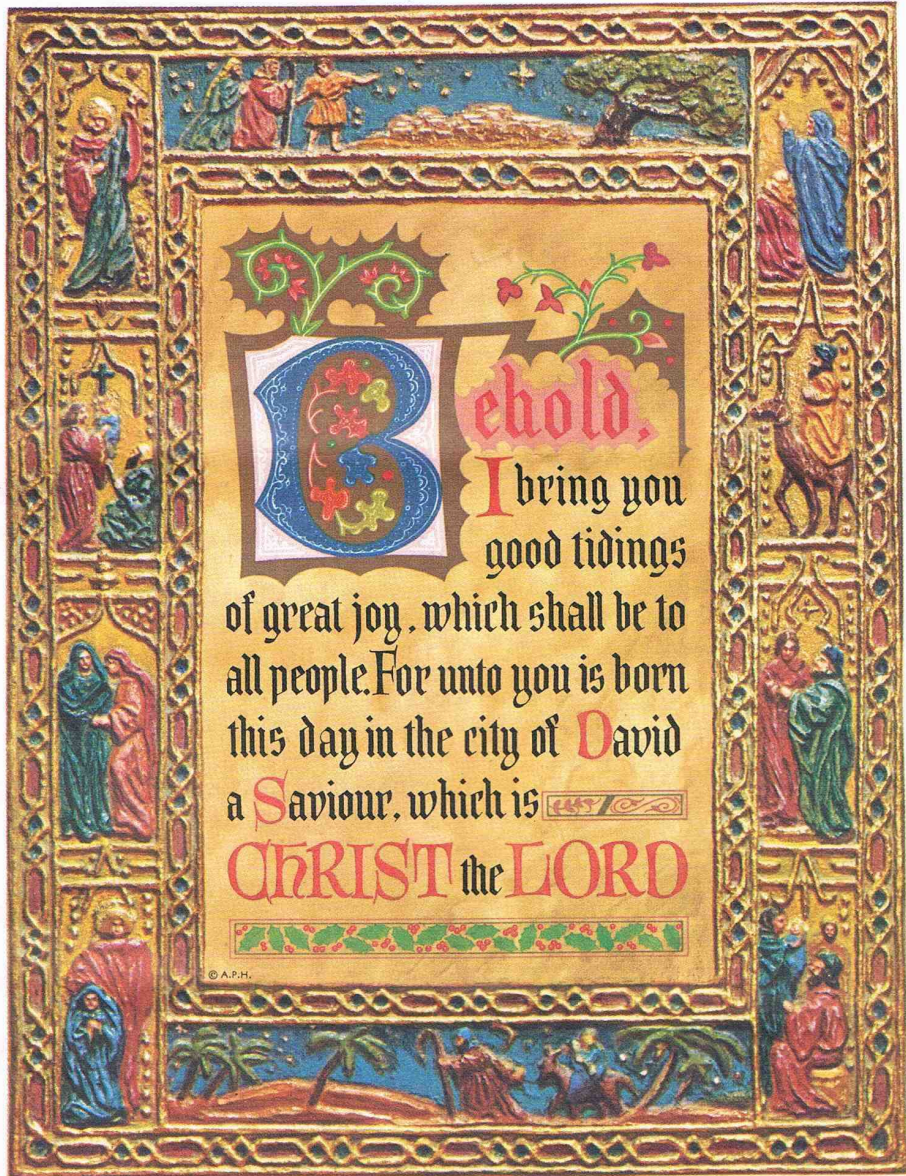


We discovered that the men seemed to enjoy this spot about as much as the women did.

Another fascinating shopping spot is called "Kings Alley."

Little shops with an old world air are perched precariously on steep slopes so that the final effect seems to be that they are practically sitting on top of each other.





UNITED METHODIST CHURCH

WAHIAWA, OAHU

DEC 24 1972

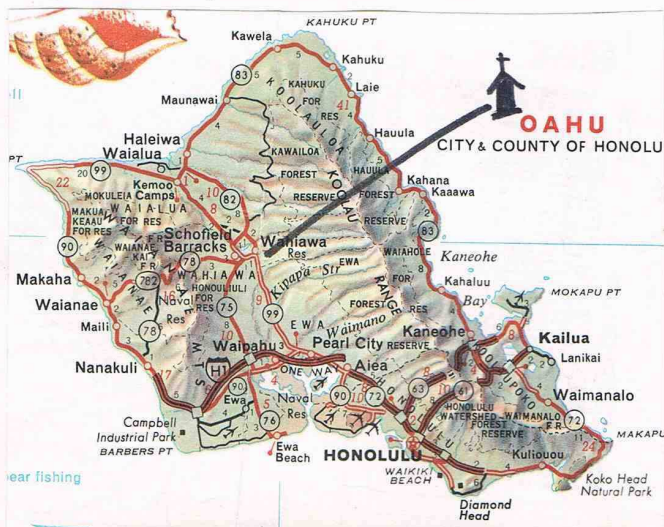


On the Sunday preceding Christmas (Christmas Eve) we traveled to the very geographic center of the island of Oahu to a lovely United Methodist Church in the village of Wahiawa. This structure, though modest in proportions, would do honor to any city or community on the mainland for it has a quiet, striking beauty which gives the worshipper a feeling of ease and "at-homeness."

Never, as long as I live, will I experience a deeper thrill at the sound of an Anthem, than when the Samoan choir sang "Silent Night," in their native tongue. It was an all male group, robed, and their voices were deep and rich. As they recessed, we observed many of them were barefoot. Other polynesian groups were represented here including Korean and Fijian. Ere we left the Sanctuary that morning I was possessed with a deep yearning to sing, "We are one in the spirit, we are one in the Lord!"

All women were presented with a pretty corsage upon entering the church. They said they were made of the "Hawaiian Christmas Berry." A picture of me wearing mine is elsewhere in this scrapbook.

On the next page you'll see pictures of the lunch and afternoon show to which we were treated.





SAMOANS
 ENTERTAIN OUR
 GROUP ON
 SUNDAY AFTERNOON
 WITH A
 "HULA SHOW"

I HAD TO GET THIS
 SNAPSHOT FOR HOW
 ELSE WOULD ANYONE
 BELIEVE IT?



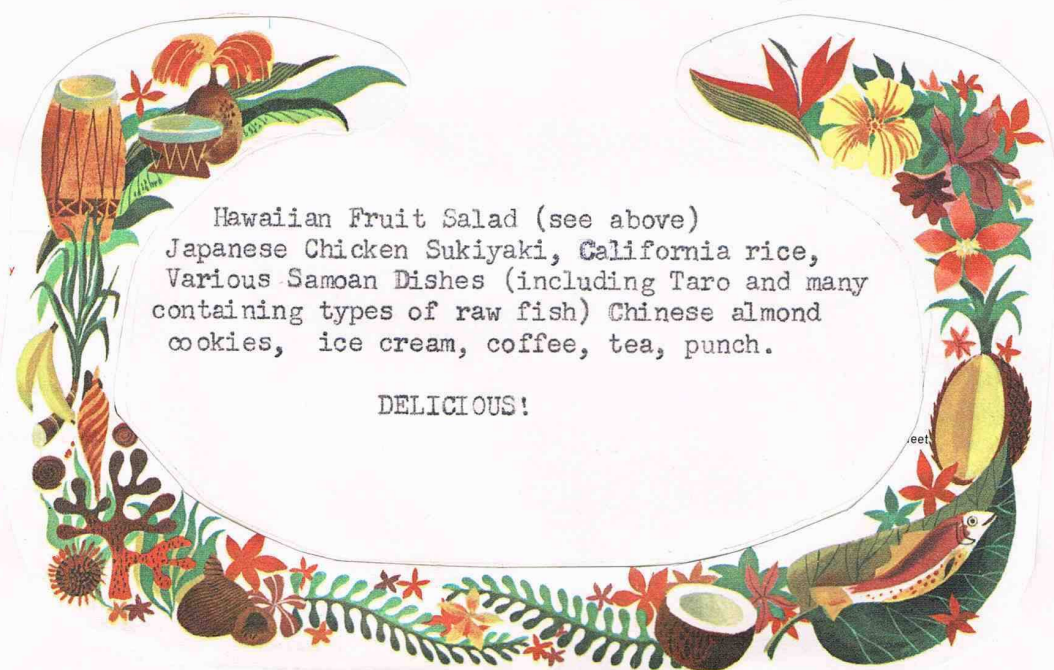
THIS MAN WAS THE
 BEST SINGER IN THE
 SAMOAN CHOIR

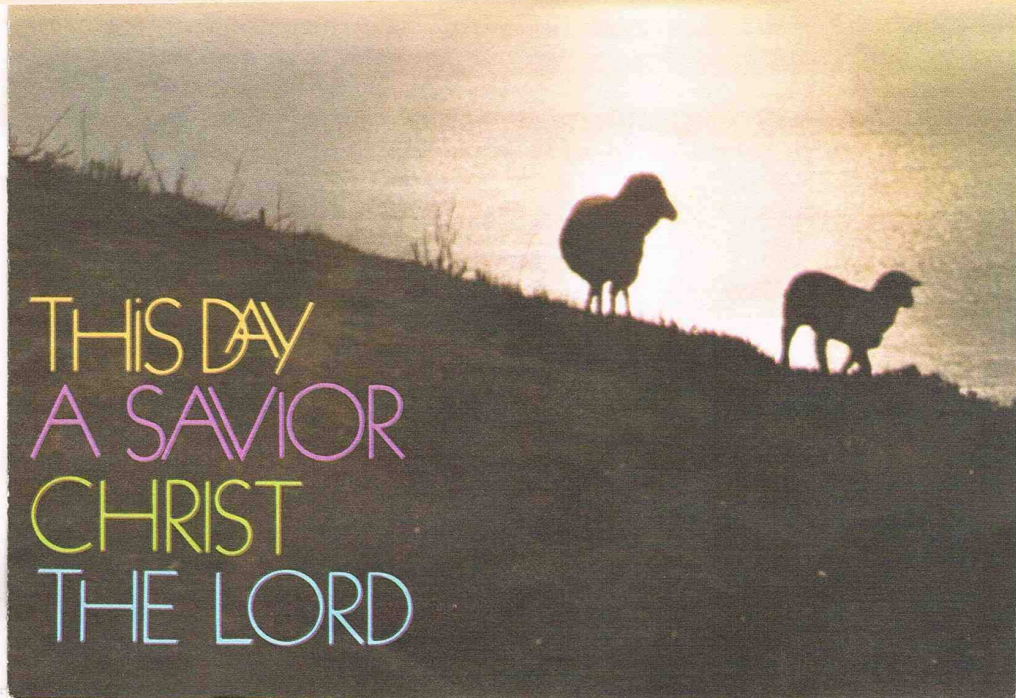
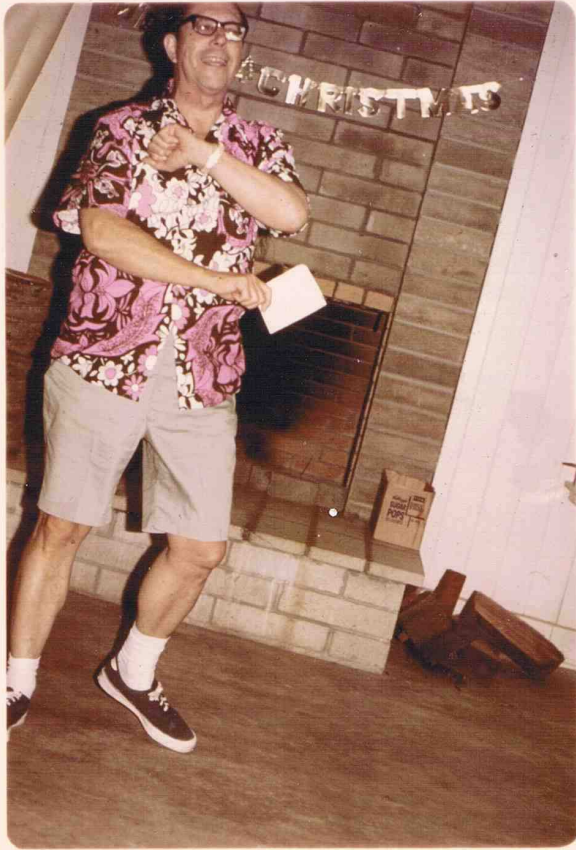




For a Christmas Table Centerpiece the ladies had fashioned miniature Christmas Trees from the prickly tops of the pineapples. Tiny ornaments were secured to each point and the finished tree set in a small "nest of palm leaves."

Today we had our first opportunity to sample authentic native foods. Various ethnic groups offer different foods. Today the Samoans had charge of the meal. Stanley and I had decided as soon as we knew we would be taking the trip to try all of the foods. Some were difficult to learn to accept, others were very delicious from the very first bite.





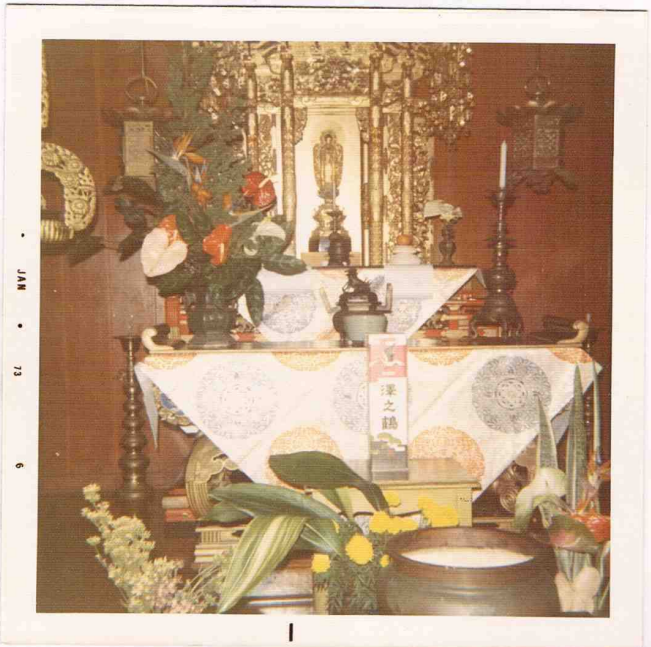
THIS DAY
A SAVIOR
CHRIST
THE LORD

Christmas Eve Services - Kailua United Methodist Church

Children's Church School Program

and

Candle Lighting Service



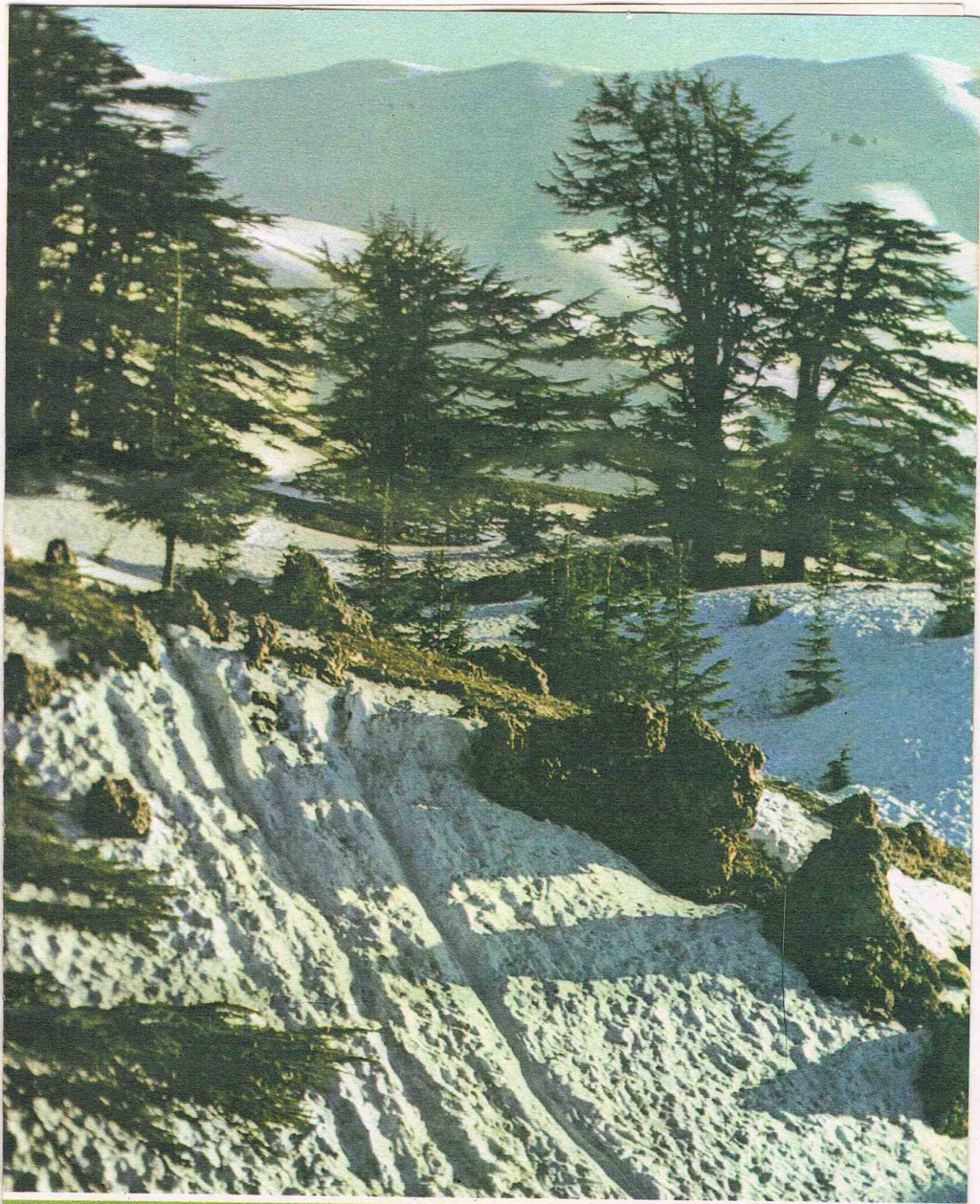
A delicious dinner of KOREAN foods was served to us here.

Upper left: A part of the after-dinner entertainment, two young men staged a contest to determine who could fashion a basket from a palm frond the neatest and quickest. Winner: 3 minutes!

Upper right: A girls' dancing class presents various native dances

Lower left: Their outdoor Christmas Tree

Lower Right: The altar of a nearby Buddhist church (that's what they called it)- and in their hymnals they used many of the songs we sing regularly - merely replaced the word "Buddha" with "Jesus!"



He sends the snow in winter

KAHUKU UNITED METHODIST CHURCH
Kahuku, Hawaii

Kahuku United Methodist Church - Kahuku, Oahu
December 31, 1972

A very cold, rainy Sunday. They had planned to take us on an afternoon walking tour through the Philippine Village nearby but the rain made this impossible, because of the muddy streets.

Mele Kalikimaka



As soon as he's finished his cold, frosty mainland gift rounds, Santa turns his sleigh towards balmy Hawaii. Like thousands of other visitors he heads straight for Waikiki beach, doffs his boots and pants, and wades into the clear warm waters off Sheraton Waikiki.—Jerry Chong photo courtesy Sheraton Hotels in Hawaii.

CHRISTMAS IN HAWAII



Here Comes Santa!

Island children don't care how Santa reaches Hawaii, just as long as he makes it here in time for Christmas. At the Coco Palms Resort on the island of Kauai, Santa glides down a water-lily strewn lagoon. The resort is located in Wailua, Kauai where the Wailua River meets the sea.

We expressed the feeling that it would take a little adjusting to get used to a warm, tropical atmosphere during the Christmas Season. We then learned that a few others in our group had the same feeling, having been transplanted into Southern California from Minnesota, New York, etc.

We concluded that Christmas is observed here very much as it is on the Mainland. We observed about the same type of Outdoor decorations and the stores were garbed very much as those back in Grand Rapids or Los Angeles. And here in Hawaii, just as back home, the many cultural groups brought along their many and varied Christmas Customs to mix with the existing ones.

Here, as in most Oriental Countries a greater use of firecrackers for all celebrations is made.

People have the day off work, some worship, some play, some make it a Family Day, but all appear to make it a time of good will.

FRANK'S JOURNAL



Ping Pong sitting down?

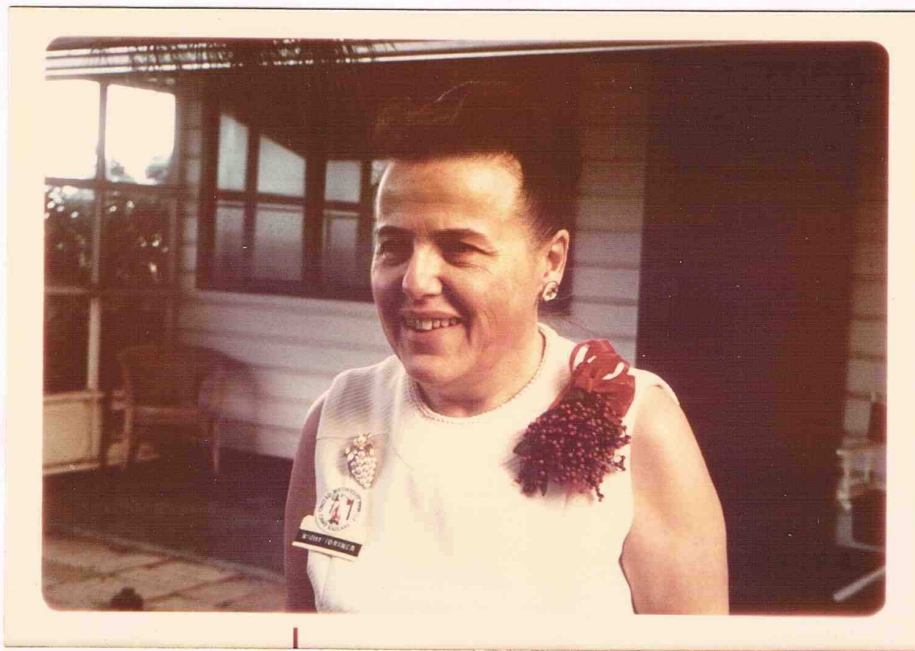
as expressed the feeling that it would take a little adjusting to get used to
the physical demands of the Christmas season. He had found that
few things in his young and the same feeling, having been accustomed to
the physical demands of the Christmas season.

It is concluded that Christmas is observed with very much as it is on the
island. He observed that the way of their decorations and the spirit
were quite very much as there had in that part of his life. He had
to be in that part of his life. He had to be in that part of his life.
The point of Christmas is to be in that part of his life.

There is a very special feeling of peace and joy in the air for all
of them in the air.

People have the way of their life. Some people are like that. Some people are like that.
The way of their life is to be like that.

CHRISTMAS DAY AT CAMP KAILANI



was spent in a delightful way. A proposal to exchange inexpensive gifts by drawing names was voted down. Instead a free-will offering was received to aid a very worthy young man pursue his education toward the ministry. All of us felt we had observed the spirit of giving as would have pleased Christ. A total of over \$200 was received.

No attempt was made to maintain a strict schedule all day. Visiting, walking, swimming, napping, etc.....made it a wonderful day.



THE NEW YEAR "INVASION"

Words have I plenty but pictures have I none since it all took place after dark!

In previous years this family camp group has always returned to the mainland before the New Year Holiday arrived. But this year our leader decided to delay the return two days in order that we might experience the great Japanese Celebration of the arrival of the New Year.

Here is another unforgettable experience!

Elsewhere I mentioned the vast number of Japanese tourists who come each year over this holiday. As the years have brought more financial prosperity to Japan the people have had money to travel and thus the vast increase in the influx of Oriental visitors each year. I never did hear a report as to how many actually came this year but just a few days previous to the celebration they were estimating it at 22,000. Five or six days before the week-end all directional signs and tourist guidelines began to appear in the Japanese language as well as English. Articles in the newspapers gave information as to behavior, customs and manners. Of course they have lots of money to spend so they are very welcome but need a little help in how they are expected to behave in certain areas.

Tour busses of these visitors were literally everywhere. They all looked prosperous, healthy and every one of them had a camera.

We were warned ahead of time about the firecrackers. Of course they are for sale everywhere in the islands and are not illegal in any respect but their are laws promoting safety and common sense.

On New Year's Eve our camp bus took us into Honolulu for the Tongalese New Year's Eve Service at the First United Methodist Church. It was in an unknown tongue so meant little to us - except for the hymns which were familiar.

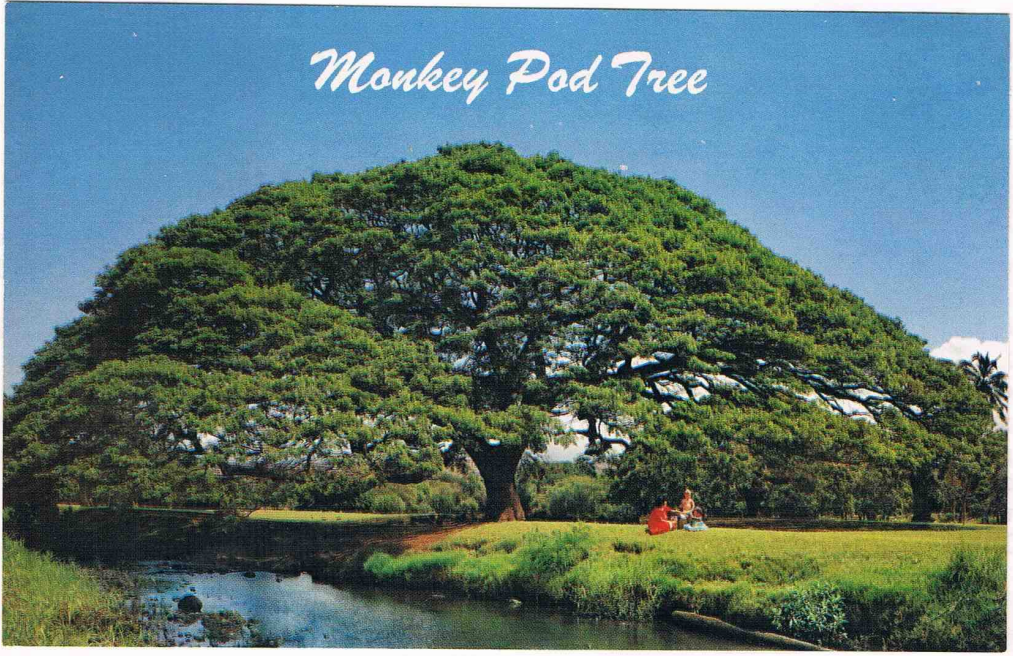
About 11:30 one could hear the distant rumblings of fireworks beginning. By 11:45 the roar was increasing noticeably and I saw Stanley slip out the side door to try to see what he could of it. Well by midnight it was a deafening roar and the entire city was covered with a thick blanket of gunpowder smoke. I do not see how anyone whith a respiratory problem could possibly have been able to breathe. The noise pounded in one's ears like a roar of a thousand cannons. It sounded like constant Thunder without the slightest let-up. The peak of the noise continued for about 15 minutes, then it very gradually began to subside. After a while the pall of smoke slowly lifted and the breeze which came in from across the bay carried the curtain of fog and mist inward "over the Pali." It was reported to us that the previous year it had been so bad that a section of the highway north out of town had been closed to traffic.

About 12:30 we were served a Tongalese meal - a few foods we were unable to identify! We never believed it could be as cold in Hawaii as it was that night.

THE NEW YORK TRIBUNE

Florida says I almost but she's not here I came close to all look
place after dark!

Monkey Pod Tree



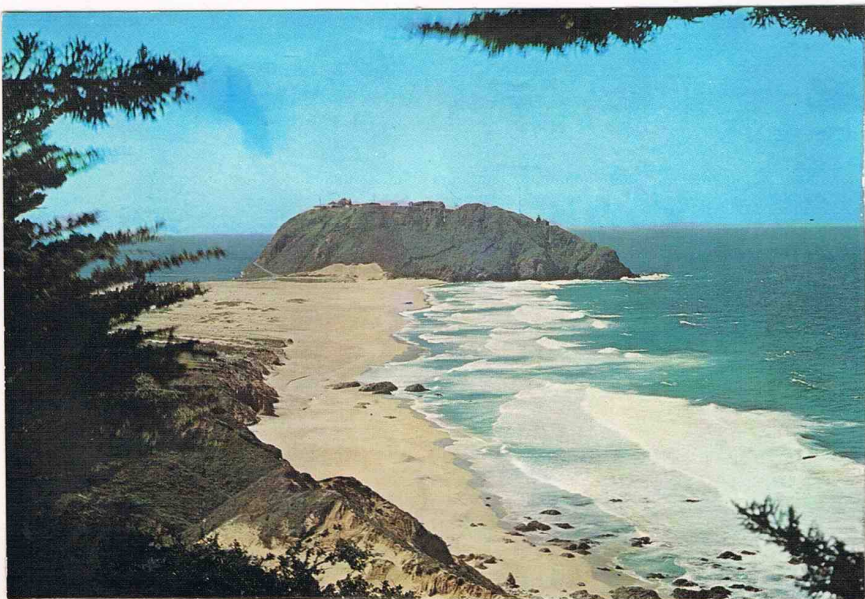
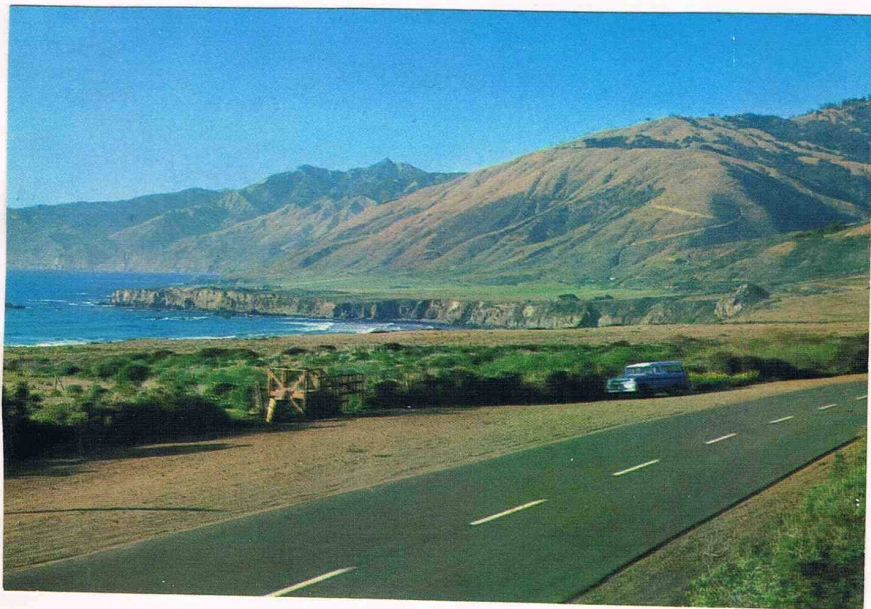
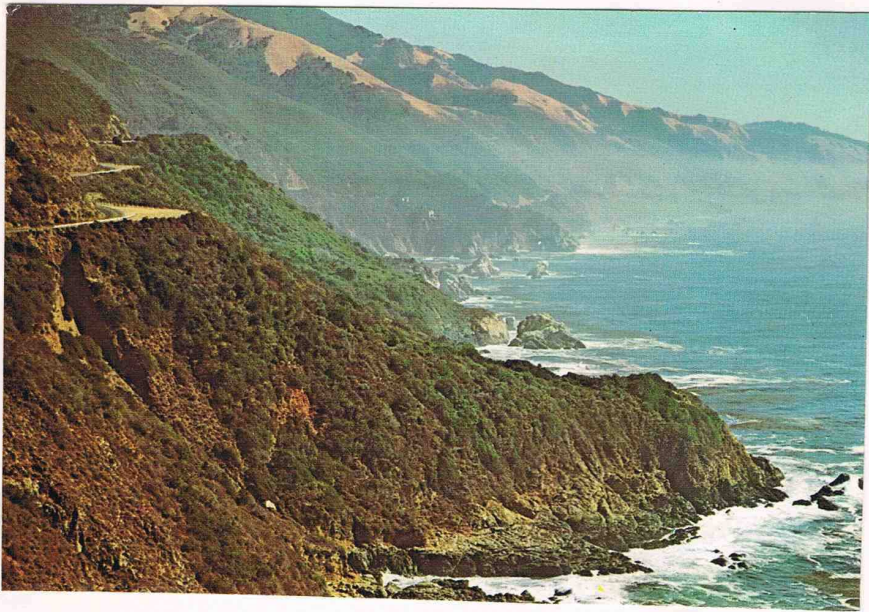
STANDARD B & P "NOISEAR"

STANDARD B & F

ODDS AND ENDS



1. Poinsetta blooming beside the road on the outskirts of Honolulu
2. This was the wrong season to see Pineapples on the plants. However a drive through the center of the Island gave us some idea of the broad expanse of these plantations.
3. We visited a tiny cemetery one day and found many graves where various offerings had been placed by loved ones. In the same cemetery we saw grave stones with the following verse engraved on it: "I am the Resurrection and the Life."
4. All packed and waiting at the sirport for our plane to take off, returning us to California. Part of the time was spent eating our lunch. We enjoyed the view of this Japanese garden just outside the airport lounge. Hundreds of huge carp played about in the pools.



A
Beautiful
Trip



1



2

San Francisco, Here We Come

The anticipation of traveling on to San Francisco for a few days with our only daughter Mary, prevented any let-down feeling upon our return from Hawaii. On the entire trip one delightful experience followed another.

It was good to see the lovely apartment where she lives, meet many of her nice new friends and renew acquaintance with her old friend, Annie. Not to mention the satisfaction of seeing my "Grand-cat" Clyde again. (He recognized me!)

We had a ride on the new and famous commuter train "BART." We shopped one afternoon in Ghirardelli Square, wandered about the Japanese Tea Garden and looked out over the bay from Nob Hill.

Mary's friend Susan had us to dinner in her apartment one evening. Susan had been in our home in Grand Rapids last summer when she and Mary Ruth made their trip to the mid-west.

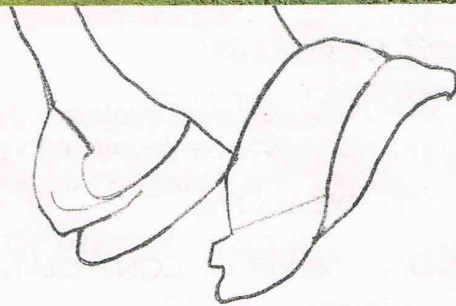
1. Japanese Tea Garden
2. Cummings Publishing Co, where Mary works
3. On Nob Hill - Alcatraz in background
4. Mary, Clyde and her hobby - Macreme'



3



4



Adapted from the painting
by Albrecht Dürer

UNITED METHODIST CHURCH
Foothill Expressway at Magdalena Avenue
Drawer O, Los Altos, California 94022
Telephone: (415) 948-1083

JAN. 7, 1973

~

GODSPELL

Musical Numbers

ACT I

1. TOWER OF BABBLE Company
2. PREPARE YE THE WAY OF THE LORD Tom and Company
3. SAVE THE PEOPLE Stacker and Company
4. DAY BY DAY Patti and Company
5. LEARN YOUR LESSONS WELL Jon
6. BLESS THE LORD Cle and Company
7. ALL FOR THE BEST Stacker and Tom
8. ALL GOOD GIFTS Kitty and Company
9. LIGHT OF THE WORLD Laurie and Company

ACT II

1. TURN BACK, O MAN Lois and Company
2. ALAS FOR YOU Stacker
3. BY MY SIDE* Angela, Kitty and Company
4. WE BESEECH THEE Craig and Company
5. ON THE WILLOWS Band
6. FINALE Company

*Lyrics by Jay Hamburger
Music by Peggy Gordon

Orchestra

Terry Bozzio, Percussion
Duncan James, Bass

Peter Munu, Guitar
John Price, Keyboard

Roles in *Godspell* are interchangeable. Alternate players for this production are EMIL BORELLI, FAYE BUTLER, ROGER KOZOL and TINA CHAPPEL

"GODSPELL" STAFF

General Manager . . . Marvin A. Krauss
General Press Representative
Gifford/Wallace, Inc.
Company Manager Reginald S. Tonry
Group Sales Consultant . . .
Margaret Opsata
Assistant Stage Manager . . .
Roger Kozol
Assistant to Producers . . . Gary Gunas
Production Coordinator . . . Gail Bell
Production Assistants . . .
Ronald Bunker, Ellen Katz,
Kathe Baar
Art Work . . . David Byrd
Advertising Agency
Blaine-Thompson Company
Attorney . . . Sidney Feinberg
Merchandising . . . un-the-Spot Productions

CREDITS: Guitars courtesy of TOYOTA GUITARS; Lighting Equipment by FOUR STAR STAGE LIGHTING, INC.; Sound Equipment by MASQUE SOUND AND RECORDING CORP.; Scenery Built by DESIGN ASSOCIATES; Special Properties Courtesy of Goodwill Industries

■ SPECIAL DISCOUNT RATES are available to clubs and organizations attending A.C.T. performances at the Geary and Marines' Memorial Theatres in groups of 25 or more. Complete details are available from the Group Sales Office, 450 Geary St., San Francisco 94102, telephone (415) 771-3880.

CENTRE
E 111
SEC. ROW SEAT
BALCONY
Marines' Memorial Theatre
SATURDAY JAN. **6**

Christmas goes on and on this year! Mary's gift to us was a pair of tickets to see the Musical "Godspell." How thankful we were for this opportunity! We had read a great deal about it and heard it reviewed on TV so we appreciated this gift a great deal. I appreciated the meaning and content of the show but must admit the volume and intensity of the music was a bit much at times. I attributed this partly to the smallness of the theatre. It was a splendid evening.

Homeward Bound

Parting is always difficult and the more so when 2500 miles separate one from loved ones. But we were able to get a reasonably early start in the morning. The early morning smog of Los Angeles soon gave way to much warm sunshine. We were to experience many various kinds of weather ere we landed at home base.

Friends have expressed the feeling of disappointment when driving through the great Imperial Valley. Quite the opposite with us. As we left the more thickly populated territory around San Bernardino and headed toward Palm Springs and Indio we looked once again upon that special kind of beauty which only the desert has to offer.

The date orchards were heavy with fruit. These orchards as well as the Citrus gardens in this area are all irrigated.

It is always fun to drive down the highway past signs informing you that you are riding over land 113 ft. below sea level!





Desert
Beauty
at
Twilight

Picnic Table
shelters
at Roadside Rest
Areas
in S. Western Texas



We telephoned ahead and determined that friends whom we knew in Phoenix were home and then drove the 100 miles off our route to spend the night with them. These are Michigan people who settled out here 10 or 12 years ago because of the wife's health. We had a delightful visit and got on our way in good time the next morning.

Our Second day we traveled as far as El Paso, Texas where we spent the night.



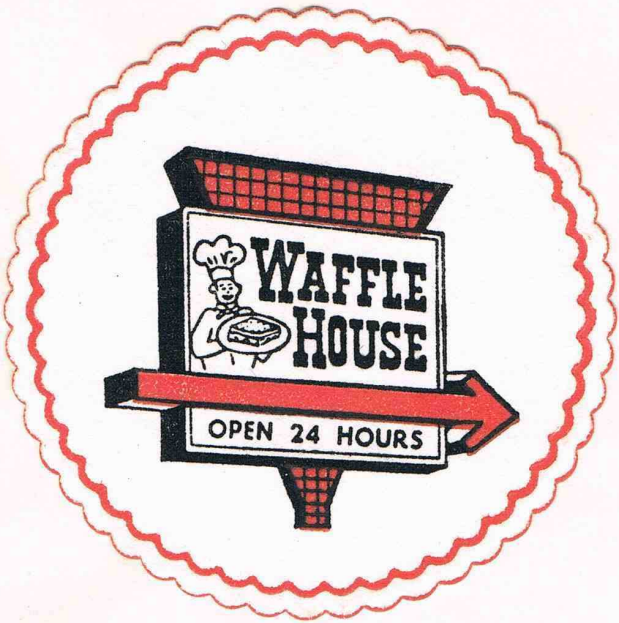
A frequent sign in Arizona

The third day out we ran into snow-packed highways in Western Texas. They were exceedingly bumpy and slippery, so hazardous that by five o'clock we pulled off at the first "Motel 6" sign we saw.....Abilene. We were thankful that we did so for by dark the motel was full to overflowing. We learned that lodging was at a premium that night, indeed tourists and truckers were sleeping in Theatres and Churches ere the night was over. Via TV we also learned that it was the heaviest snowfall they's had this century, 11 inches and the lowest temperature since 1905... 8 above!

In the morning we started out in spite of dire warnings. Being from Michigan we figured we knew how to drive on it. Over a 25 miles stretch (driven at 20 - 25 mph!) we saw dozens of huge tractor-trailor rigs overturned in the median and countless cars stranded or wrecked. We couldn't keep from noting that the only two times we ran into bad weather on the entire trip happened to be in Texas!



50 mi. East of Abilene, Tex.



4th
Night
→



LITTLE ROCK,
ARK.

5th
Night

Indianapolis,
Ind. →



6th day

"Home, Sweet Home"

Addendum

This section contain miscellaneous pages that were loose in the book. No attempt has been made to fit them into the regular pages in the book.

They are included here to ensure completeness' of the digital version of the book.

Left Home July 9 ~~Thurs~~ Starting Mileage 13224
 Arr. Fish Lake Camp 13469

245 Miles

| | | | |
|---------------|---------------------------------------|------------------------|-------|
| Sat. July 11 | Left Fish Lake Camp (Round Lake, Ill) | | 13469 |
| | Arr - Baraboo, Wisc. | 134 miles | 13603 |
| Sat. July 18 | Left Baraboo (Skillet Creek) | | 13603 |
| | Arr Bruce Crossing, MI | 251 miles | 13854 |
| Sun. July 19 | Left Bruce Crossing | | 13854 |
| | Arr Copper Harbor | 105 miles | 13959 |
| Tues July 21 | Left Copper Harbor | | 13959 |
| | Arr Baraga | 76 miles | 14035 |
| Thurs July 23 | Left Baraga | | 14035 |
| | Arr Munising | 112 miles | 14147 |
| Sat July 25 | Left Munising | | 14147 |
| | Arr Manistique | 70 70 miles | 14217 |
| Sun July 26 | Left Manistique | | 14217 |
| | Arr Traverse City Kalkaska | 190 miles | 14402 |
| Mon July 27 | Left Kalkaska | | 14402 |
| | Arr Traverse City | 25 miles | 14432 |
| Tue July 29 | Left Trav. City | | 14432 |
| | Arrive Cadillac | 48 miles | 14480 |
| Fri. July 31 | Left Cadillac | | 14480 |
| | Arrive Lakeview Camp | 84 miles | 14564 |
| Sun. Aug 2 | Left Lakeview | | 14564 |
| | Arr Home | 62 miles | 14626 |

Total Miles 1402

| | | | | |
|-----|--------------------------|-------------------|---------------------|---------------|
| Gas | July 8 (Home) | 33.8 gal | \$ 30 ⁰⁰ | mileage 13222 |
| | 11 (Fish Lake Camp) | Volvo, Ill | 35 gal \$ 32.52 | 13469 |
| | 18 (Sterens Point, Wisc) | 30.64 gal | \$ 30.00 | 13696 |
| | 19 (Hancock MI) | 27.8 gal | \$ 30 ⁰⁰ | 13912 |
| | 25 (Shingleton MI) | 19.1 gal (104.9!) | \$ 20 ⁰⁰ | 14161 |
| | 26 (St Ignace) | 35 gal | \$ 34.97 | 14313 |
| | Aug 2 (Lakeview) | 15 gal | \$ 14.44 | 14582 |

Aug 31 Put in 10 gal.

11807 Atlanta

5991



POHAI NANI

Where retirement living is **KAMAHAO***

45-090 Namoku Street • Kaneohe, Oahu, Hawaii 96744

Picture our Wonderful* Life at **POHAI NANI**

KAMAHAO SETTING

Pohai Nani means "surrounded by beauty" and never was a spot so aptly named. Nestled in the verdant hills above Kaneohe Bay, the 14-story main building and cottages stand in a uniquely landscaped setting of brilliantly colored native flowers, shrubbery and trees. Far removed from noise and traffic, we are still just 20 minutes away from the shopping centers and cultural attractions of downtown Honolulu.

WONDERFUL PEOPLE

We residents of Pohai Nani are active people with a diversity of educational, occupational and geographical backgrounds. Consequently we have a broad range of hobbies and other interests to share with each other. A Resident's Hui (Association) coordinates the various cultural, recreational and religious activities but each resident has all the privacy that he chooses. "Life at Pohai Nani is what we make it."

KAMAHAO MEALS

Delicious food, tastefully prepared, makes mealtime an event to look forward to. We sit with whom we please, making new friends and renewing old acquaintances at every meal. And always adding to our pleasure is the panoramic view from the dining room of the Koolau Mountains with their ever-changing shadows and colors.

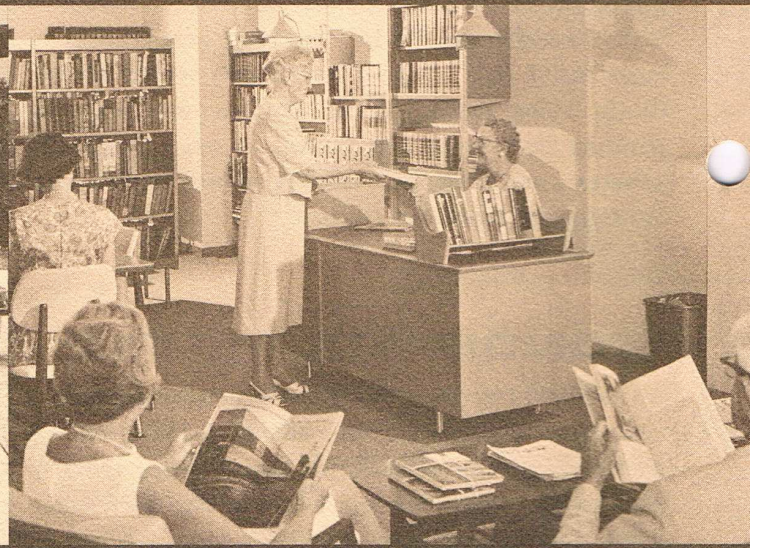
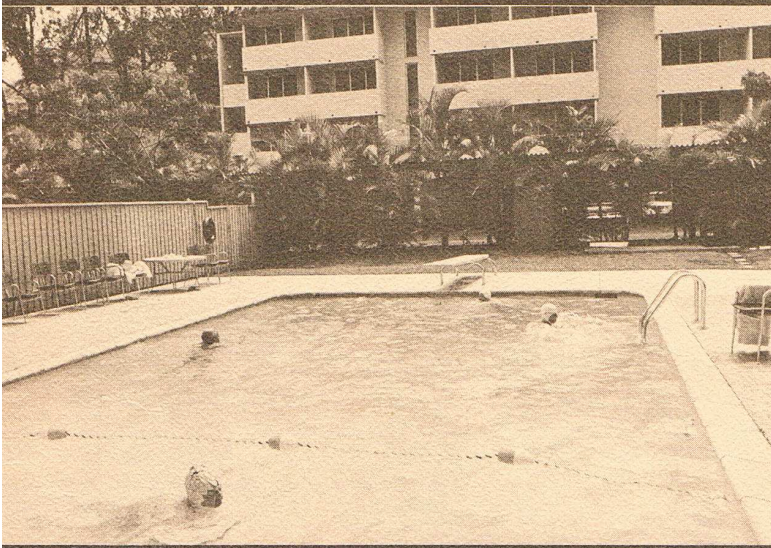


Our Recreation Facilities at F

There is no “set” program for recreational activities at Pohai Nani. Our activities grow according to our interests . . . some permanent, some temporary.



This is certain – there is never a lack of things to do, interesting people to do them with, and excellent facilities to accommodate a wide variety of interests.

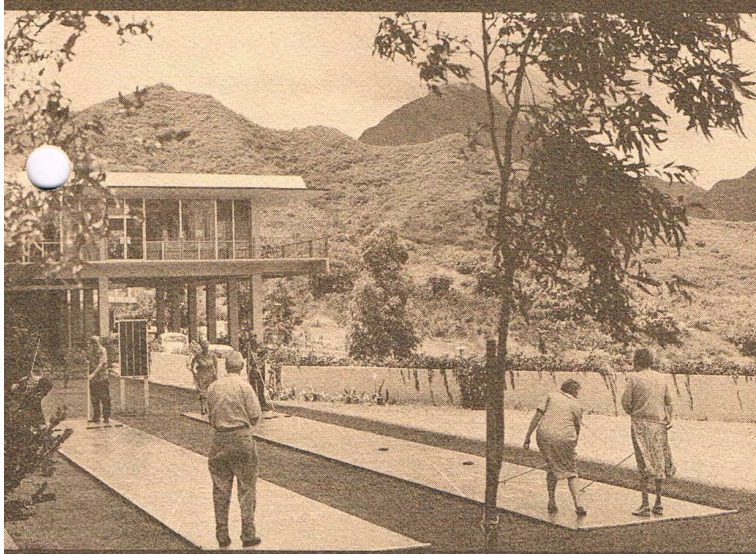
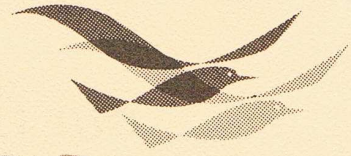


HEATED POOL Perhaps the traditional Hawaiian love of water sports accounts for the great popularity of the Pohai Nani pool. Those of us who prefer ocean swimming find beautiful sandy beaches in the nearby Kailua area.

ART STUDIO One of our most dedicated groups of amateurs are those studying Chinese Brush Stroke. Along with other schools of painting it is a fascinating pastime and all the more enjoyable for the magnificent scenery that surrounds us with its constant challenge to the budding artist.

LIBRARY Our well stocked library of 2000 books and periodicals provides an ideal spot to relax with one's favorite authors. Residents who are interested also share their reading with others through book reviews.

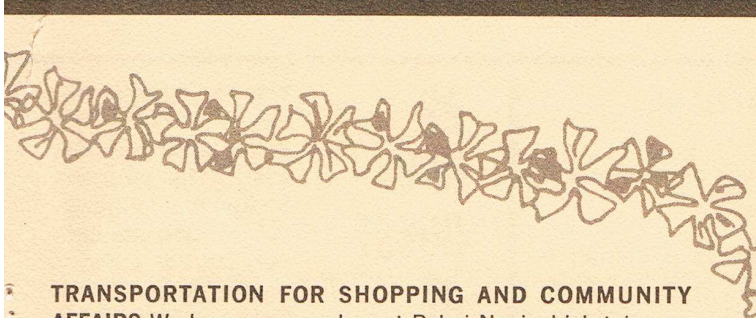
POHAI NANI are KAMAHAO!



NEARBY GOLF COURSE Less than a mile from Pohai Nani is the challenging Bay View Golf Course which is illuminated for night play.

BOWLING AND SHUFFLEBOARD These time honored sports are great favorites with Pohai Nani residents. Ping pong, billiards, bridge, cribbage, bingo and croquet are also high on the popularity list of games for which community facilities are provided at no extra cost to us.

HOBBY SHOP Complete facilities for woodworking find enthusiastic users engaged in a wide variety of building and refinishing projects.



TRANSPORTATION FOR SHOPPING AND COMMUNITY AFFAIRS We have our own bus at Pohai Nani which takes us to and from Honolulu on weekdays at no charge and also makes free, regularly scheduled trips to shopping centers in three different towns. Transportation to such points of interest and community affairs as the Honolulu Symphony Concerts, Sea Life Park, Polynesian Cultural Center, and Community Theatre plays is provided at minimal cost.

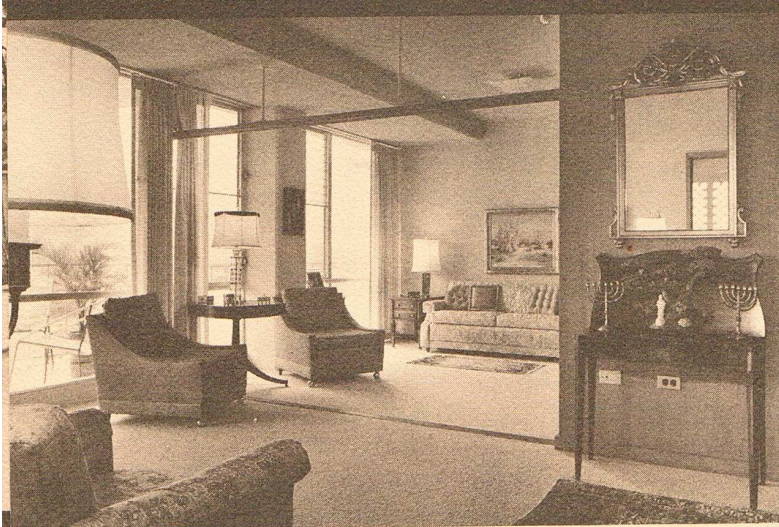


our Continuing Care Program provides permanent security



Of the many features that make living at Pohai Nani a happy experience, perhaps the most important is the freedom from economic care enjoyed by each and every one of us. The Continuing Care Program here enables us to realize the Permanent Security that makes possible the truly full life in retirement. You see, the fees that a Pohai Nani resident pays for this continuing care, when prepaid, *can never be increased*. Should your finances require paying your Continuing Care Fee by the month, you are still *protected against inflation* by a limit over which your payments can never be raised.

The Continuing Care Program covers medical care in the 40 bed Kahanaola Convalescent Hospital right here on the grounds and surgery, if necessary, in the finest of general hospitals.



Delicious meals, housekeeping service, maintenance, linens and a lifetime lease on your choice of apartment or cottage are also provided under the Continuing Care Program. Little wonder that we are happy and active in our retirement. For here at Pohai Nani, permanent security has become a reality.

FEATURES OF COMFORTABLE LIVING AT POHAI NANI

- Functional floor plans provide generous space for a variety of furniture arrangements.
- All accommodations have private baths, spacious wardrobe closets and ample storage space.
- Modern 14-story central building is fireproof; grounds and building are patrolled regularly by security guards.
- Laundry rooms with electric washers and dryers are conveniently located in the central building.
- Full size kitchens, glassed-in solariums and beautiful lounges, located on each floor of the central building, provide setting for social gatherings of residents and their guests.

**BE
OUR
GUEST
AT
POHAI
NANI**

You can't really picture what Pohai Nani is like until you have seen it for yourself. So we are inviting you to spend some time here as our guest to enjoy The Full Life in Retirement with us. For full information CALL **(808) 247-6211** or write today.

One of 7 Retirement Residences of Pacific Homes, a non-profit corporation of The United Methodist Church/Open to All Faiths and Races.



FROM:

View from

TO:

Sea Table

POSTAGE

3c

AIRMAIL

6c



STANLEY FORKNER



NAOMI FORKNER